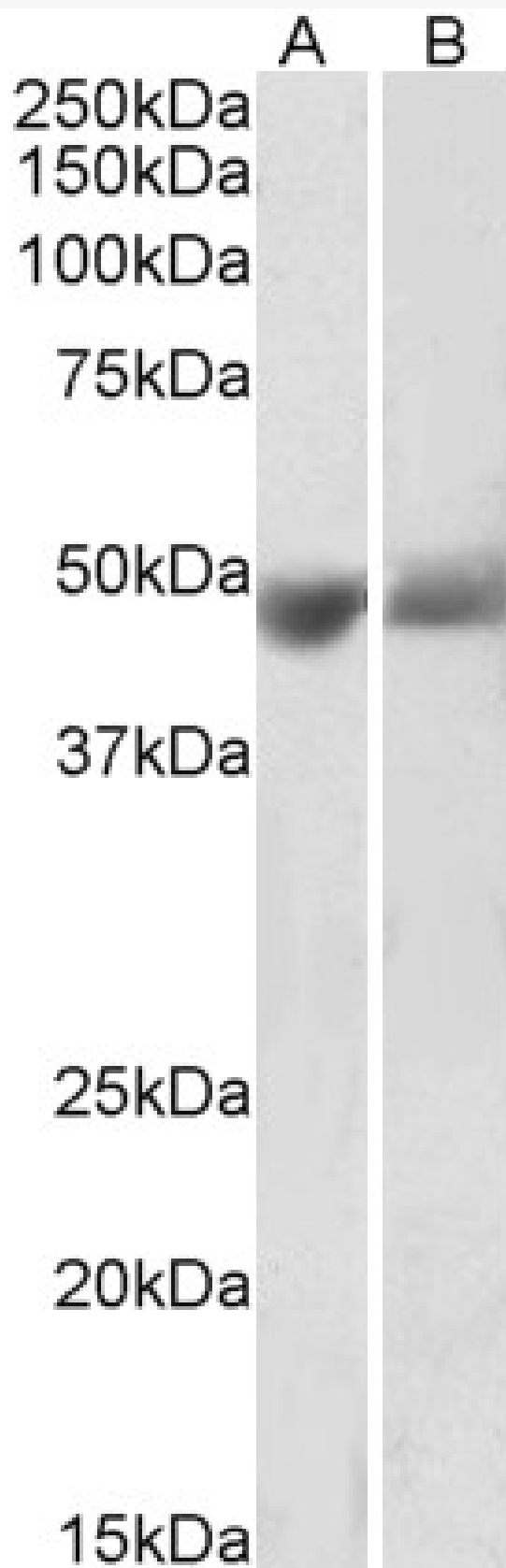


# GOAT ANTI-SERPINF1 / PEDF ANTIBODY

**SKU:** EB12223



## SPECIFICATIONS

<b>Formulation</b>	Supplied at 0.5 mg/ml in Tris saline, 0.02% sodium azide, pH7.3 with 0.5% bovine serum albumin.
<b>Unit Size</b>	100 µg
<b>Storage Instructions</b>	Aliquot and store at -20°C. Minimize freezing and thawing.
<b>Synonym / Alias Names</b>	serine (or cysteine) proteinase inhibitor, clade F (alpha-2 antiplasmin, pigment epithelium derived factor), member 1  proliferation-inducing protein 35  pigment epithelium-derived factor  serpin peptidase inhibitor, clade F (alpha-2 antiplasmin, pigment epithelium derived factor), member 1  PIG35  PEDF  EPC-1 SERPINF1
<b>Accession ID</b>	NP_002606.3
<b>Blocking Peptide</b>	EBP12223
<b>Immunogen</b>	Peptide with sequence C-KITGKPIKLTQVEHR, from the internal region of the protein sequence according to NP_002606.3.
<b>Peptide Sequence</b>	C-KITGKPIKLTQVEHR
<b>Purification Method</b>	Purified from goat serum by ammonium sulphate precipitation followed by antigen affinity chromatography using the immunizing peptide.
<b>Shipping Instructions</b>	Refrigerated
<b>Predicted Species</b>	Human, Dog, Pig, Cow
<b>Reactive Species</b>	Human
<b>Human Gene ID</b>	5176
<b>Product Grade</b>	<a href="https://prod-vector-labs-pimcore-assets.s3.us-east-1.amazonaws.com/assets/products/image/elite_medium.png">https://prod-vector-labs-pimcore-assets.s3.us-east-1.amazonaws.com/assets/products/image/elite_medium.png</a>
<b>ELISA</b>	
<b>Detection Limit</b>	Antibody detection limit dilution 1:128000.
<b>Western Blot</b>	Approx 48kDa band observed in Human Albumin-depleted Serum and Plasma lysates (calculated MW of 46.3kDa according to NP_002606.3). Recommended concentration: 0.3-1µg/ml.
<b>Application Type</b>	Pep-ELISA, WB

## DOCUMENTS

- [Data Sheet](#)

## GALLERY IMAGES

