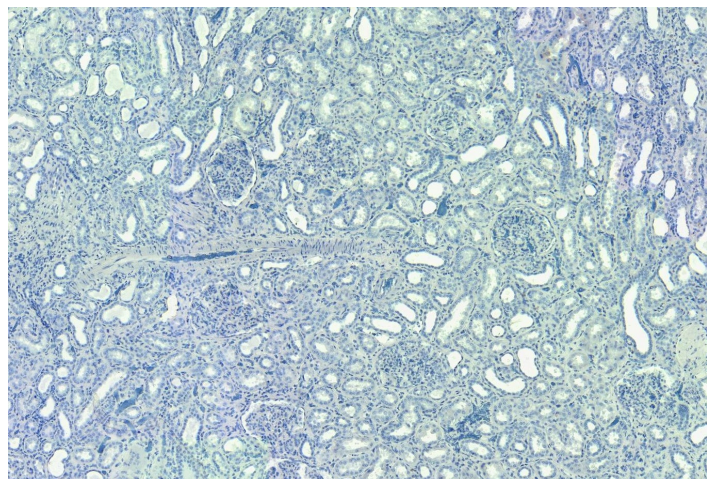


GOAT ANTI-SET / I2 ALPHA PP2A ANTIBODY

SKU: EB05148



SPECIFICATIONS

Formulation Supplied at 0.5 mg/ml in Tris saline, 0.02% sodium azide, pH7.3 with 0.5% bovine serum albumin.

Unit Size 100 µg

Storage Instructions Aliquot and store at -20°C. Minimize freezing and thawing.

Synonym / Alias Names HLA-DR-associated protein II|template-activating factor I|protein phosphatase type 2A inhibitor|inhibitor-2 of protein phosphatase-2A|inhibitor of granzyme A-activated DNase|Template-Activating Factor-I, chromatin remodelling factor|SET translocation (myeloid leukemia-associated)|OTTHUMP00000022286|LA-DR-associated protein II|TAF-IBETA|TAF-I|PHAPII|IPP2A2|IGAAD|I2PP2A|2PP2A|SET nuclear oncogene|SET

Accession ID NP_003002.2

Blocking Peptide EBP05148

Immunogen Peptide with sequence SAPAAKVSKKELNS-C, from the N Terminus of the protein sequence according to NP_003002.2.

Product Comments This antibody is expected to recognize isoform 2 (NP_003002.2).

Peptide Sequence SAPAAKVSKKELNS-C

Purification Method Purified from goat serum by ammonium sulphate precipitation followed by antigen affinity chromatography using the immunizing peptide.

Shipping Instructions Refrigerated

Predicted Species	Human, Cow
Reactive Species	Human
Human Gene ID	6418
Product Grade	https://prod-vector-labs-pimcore-assets.s3.us-east-1.amazonaws.com/assets/products/image/elite_medium.png
IHC Results	Paraffin embedded Human Kidney. Recommended concentration: 7µg/ml.
ELISA	
Detection Limit	Antibody detection limit dilution 1:128000.
Western Blot	Approx 38kDa band observed in lysates of Human Kidney lysates and of cell lines Daudi and Molt4 (calculated MW of 32.1kDa according to NP_003002.2). Recommended concentration: 0.3-1µg/ml. Primary incubation was 1 hour.
Application Type	Pep-ELISA, WB, IHC

DOCUMENTS

- [Data Sheet](#)

GALLERY IMAGES

