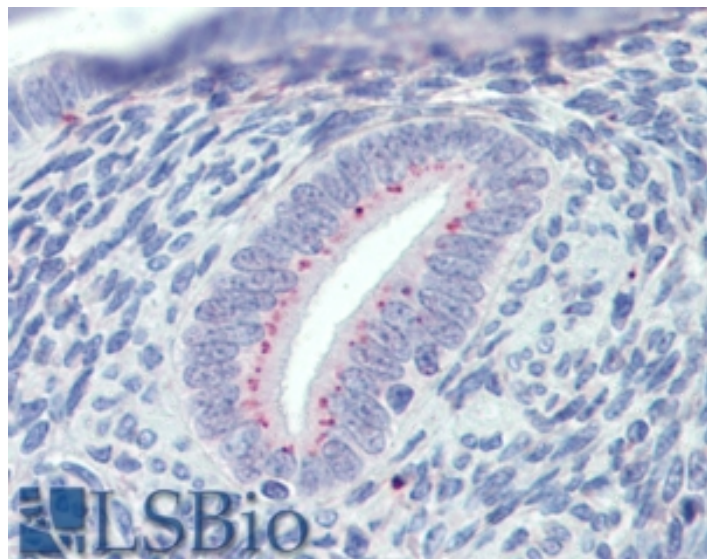


GOAT ANTI-SFRP1 / FRP1 ANTIBODY

SKU: EB08958



SPECIFICATIONS

Formulation Supplied at 0.5 mg/ml in Tris saline, 0.02% sodium azide, pH7.3 with 0.5% bovine serum albumin.

Unit Size 100 µg

Storage Instructions Aliquot and store at -20°C. Minimize freezing and thawing.

Synonym /

Alias Names secreted apoptosis-related protein 2|SARP2|FrzA|FRP1|FRP-1|FRP|secreted frizzled-related protein 1|SFRP1

Accession ID NP_003003.3

Blocking Peptide EBP08958

Immunogen Peptide with sequence C-PNATEASKPQGTT, from the internal region of the protein sequence according to NP_003003.3.

Peptide Sequence C-PNATEASKPQGTT

Purification Method Purified from goat serum by ammonium sulphate precipitation followed by antigen affinity chromatography using the immunizing peptide.

Shipping Instructions Refrigerated

Predicted Species	Human, Mouse
Reactive Species	Human
Human Gene ID	6422
Product Grade	https://prod-vector-labs-pimcore-assets.s3.us-east-1.amazonaws.com/assets/products/image/elite_medium.png
IHC Results	In paraffin embedded Human Uterus shows specific organellar stains in the epithelial cells of the endometrial gland. Recommended concentration, 4-6µg/ml.
ELISA	
Detection Limit	Antibody detection limit dilution 1:2000.
Application Type	Pep-ELISA, IHC

DOCUMENTS

- [Data Sheet](#)

GALLERY IMAGES

