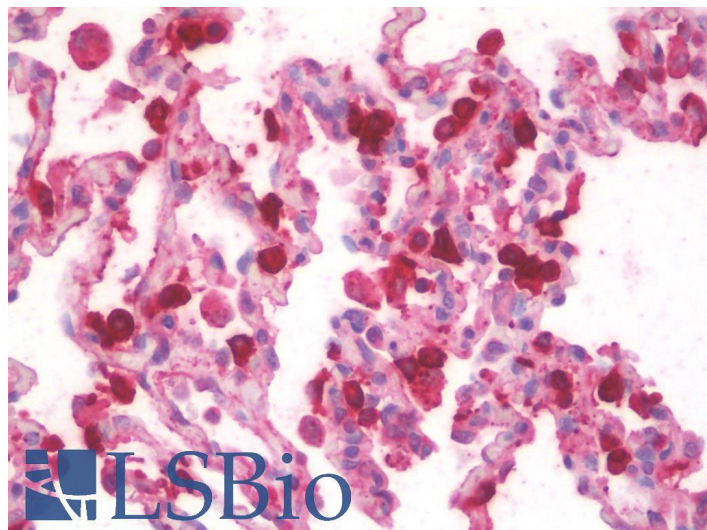


GOAT ANTI-SFTPA1 / SFTPA2 (AA102-115) ANTIBODY

SKU: EB11380



SPECIFICATIONS

Formulation Supplied at 0.5 mg/ml in Tris saline, 0.02% sodium azide, pH7.3 with 0.5% bovine serum albumin.

Unit Size 100 µg

Storage Instructions Aliquot and store at -20°C. Minimize freezing and thawing.

Synonym / Alias Names SFTPA1| surfactant, pulmonary-associated protein A1B| surfactant, pulmonary-associated protein A1A| surfactant protein A1B| surfactant protein A1 variant AD' 6A4| surfactant protein A1 variant AD' 6A3| surfactant protein A1 variant AD' 6A2| surfactant protein A1 variant AD' 6A| surfactant protein A1 variant ACD' 6A4| surfactant protein A1 variant ACD' 6A3| surfactant protein A1 variant ACD' 6A2| surfactant protein A1 variant AB'D' 6A4| surfactant protein A1 variant AB'D' 6A3| surfactant protein A1 variant AB'D' 6A2| surfactant protein A1| SP-A1| SPA1| SP-A| SPA| SFTPA1B| SFTP1| pulmonary surfactant-associated protein A1| PSP-A| PSPA| PSAP| OTTHUMP00000019931| OTTHUMP00000019930| OTTHUMP00000019929| OTTHUMP00000019928| MGC198590| MGC133365| FLJ99559| FLJ79095| FLJ77898| FLJ61144| FLJ51913| FLJ50593| collectin-4| COLEC4| alveolar proteinosis protein| 35 kDa pulmonary surfactant-associated protein

Accession ID NP_005402.3; NP_001087239.2; NP_001158117.1; NP_001158118.1; NP_001092138.1

Blocking Peptide EBP11380

Immunogen Peptide with sequence C-HLDEELQATLHDFR, from the internal region of the protein sequence according to NP_005402.3; NP_001087239.2; NP_001158117.1; NP_001158118.1; NP_001092138.1.

Product Comments	This antibody is expected to recognize all the reported isoforms of A1 (NP_005402.3; NP_001087239.2; NP_001158117.1; NP_001158118.1) and A2 (NP_001092138.1), Reported variants represent identical protein: NP_001158116.1, NP_005402.3, NP_001158119.1
Peptide Sequence	C-HLDEELQATLHDFR
Purification Method	Purified from goat serum by ammonium sulphate precipitation followed by antigen affinity chromatography using the immunizing peptide.
Shipping Instructions	Refrigerated
Predicted Species	Human, Cow
Reactive Species	Human
Human Gene ID	653509, 729238
Product Grade	https://prod-vector-labs-pimcore-assets.s3.us-east-1.amazonaws.com/assets/products/image/elite_medium.png
IHC Results	Paraffin embedded Human Lung. Recommended concentration: 5µg/ml.
ELISA Detection Limit	Antibody detection limit dilution 1:32000.
Western Blot	Approx 30kDa band observed in Human Lung lysates (calculated MW of 27.7kDa according to NP_001087239.2). Recommended concentration: 0.01-0.03µg/ml.
Application Type	Pep-ELISA, WB, IHC

DOCUMENTS

- [Data Sheet](#)

GALLERY IMAGES

