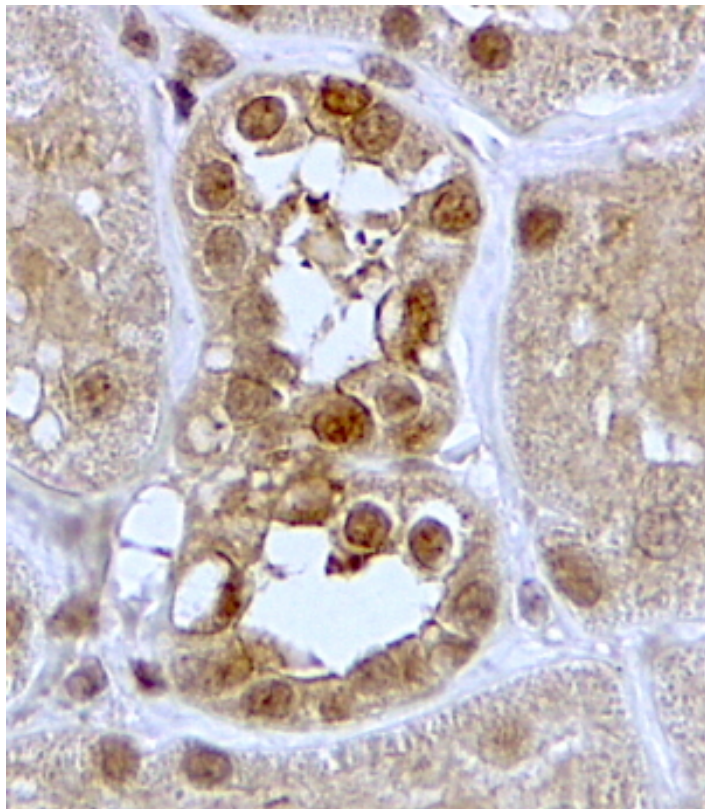


# GOAT ANTI-SGK ANTIBODY

**SKU:** EB09396



## SPECIFICATIONS

**Formulation** Supplied at 0.5 mg/ml in Tris saline, 0.02% sodium azide, pH7.3 with 0.5% bovine serum albumin.

**Unit Size** 100 µg

**Storage Instructions** Aliquot and store at -20°C. Minimize freezing and thawing.

**Synonym / Alias Names** serum and glucocorticoid regulated kinase|serine/threonine protein kinase SGK|OTTHUMP00000017247|SGK|serum/glucocorticoid regulated kinase 1|SGK1

**Accession ID** NP\_005618.2

**Blocking Peptide** EBP09396

<b>Immunogen</b>	Peptide with sequence C-TEEPVPNSIGKSPD, from the C Terminus of the protein sequence according to NP_005618.2.
<b>Peptide Sequence</b>	C-TEEPVPNSIGKSPD
<b>Purification Method</b>	Purified from goat serum by ammonium sulphate precipitation followed by antigen affinity chromatography using the immunizing peptide.
<b>Shipping Instructions</b>	Refrigerated
<b>Predicted Species</b>	Human, Mouse, Rat, Dog, Cow
<b>Reactive Species</b>	Human
<b>Human Gene ID</b>	6446
<b>Mouse Gene ID</b>	20393
<b>Rat Gene ID</b>	29517
<b>Product Grade</b>	<a href="https://prod-vector-labs-pimcore-assets.s3.us-east-1.amazonaws.com/assets/products/image/elite_medium.png">https://prod-vector-labs-pimcore-assets.s3.us-east-1.amazonaws.com/assets/products/image/elite_medium.png</a>
<b>IHC Results</b>	In paraffin embedded Human Kidney shows membrane and nuclear stains in epithelial cells of DCT. Recommended concentration, 2-4µg/ml.
<b>ELISA</b>	
<b>Detection Limit</b>	Antibody detection limit dilution 1:4000.
<b>Application Type</b>	Pep-ELISA, IHC

## DOCUMENTS

- [Data Sheet](#)

## GALLERY IMAGES

