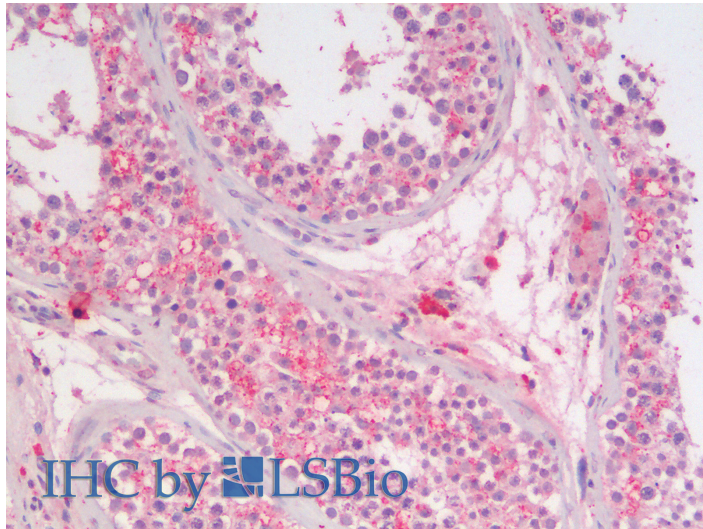




GOAT ANTI-SGTA (MOUSE AA84-97) ANTIBODY

SKU: EB11841



SPECIFICATIONS

Formulation Supplied at 0.5 mg/ml in Tris saline, 0.02% sodium azide, pH7.3 with 0.5% bovine serum albumin.

Unit Size 100 µg

Storage Instructions Aliquot and store at -20°C. Minimize freezing and thawing.

Synonym / Alias Names Stg|small glutamine-rich tetratricopeptide repeat-containing protein alpha|small glutamine-rich tetratricopeptide repeat (TPR)-containing, alpha|small glutamine-rich tetratricopeptide repeat (TPR) containing protein|Sgta|Sgt|D10Ert|D190e|alpha-SGT|AI194281|5330427H01Rik

Accession ID NP_078775.1

Blocking Peptide EBP11841

Immunogen Peptide with sequence C-PSEEDSAEAERLKT, from the internal region of the protein sequence according to NP_078775.1.

Peptide Sequence C-PSEEDSAEAERLKT

Purification Method Purified from goat serum by ammonium sulphate precipitation followed by antigen affinity chromatography using the immunizing peptide.

Shipping Instructions Refrigerated



Predicted Species	Human, Mouse, Rat, Dog, Pig, Cow
Reactive Species	Human
Human Gene ID	6449
Mouse Gene ID	52551
Rat Gene ID	64667
Product Grade	https://prod-vector-labs-pimcore-assets.s3.us-east-1.amazonaws.com/assets/products/image/elite_medium.png
IHC Results	Paraffin embedded Human Testis. Recommended concentration: 5µg/ml.
ELISA Detection Limit	Antibody detection limit dilution 1:2000.
Western Blot	Approx 35kDa band observed in lysates of cell line PD19 and doublet of 30+35kDa in lysates of cell line K562 (calculated MW of 34.3kDa according to NP_078775.1). Recommended concentration: 1-2µg/ml. Primary incubation was 1 hour.
Application Type	Pep-ELISA, WB, IHC

DOCUMENTS

- [Data Sheet](#)

GALLERY IMAGES

