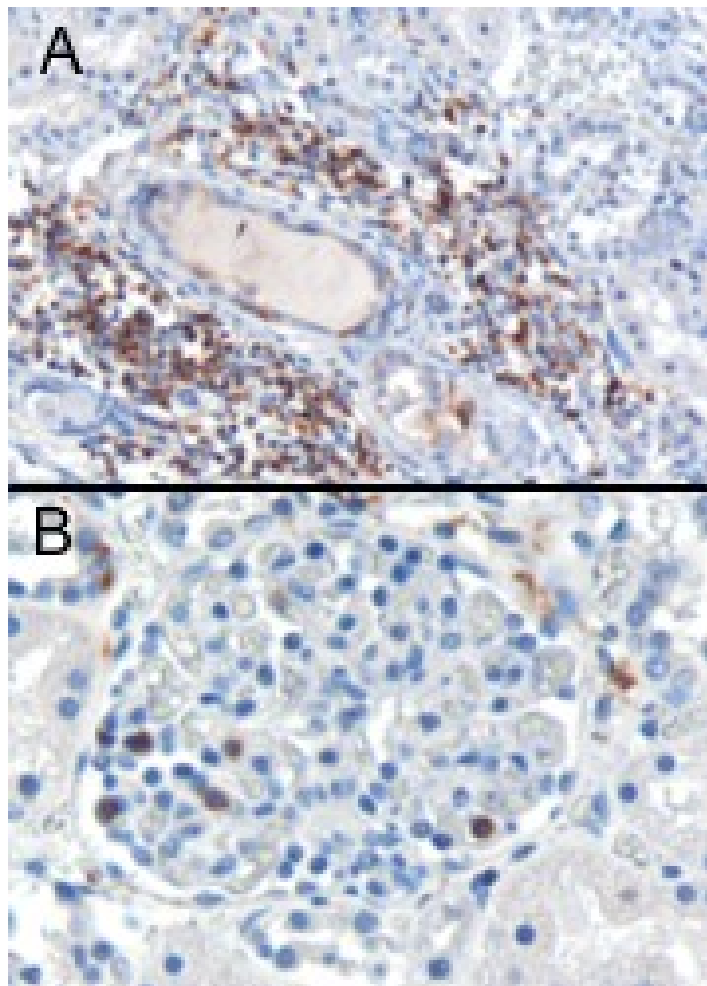


GOAT ANTI-SH3BP1 ANTIBODY

SKU: EB06271



SPECIFICATIONS

Formulation Supplied at 0.5 mg/ml in Tris saline, 0.02% sodium azide, pH7.3 with 0.5% bovine serum albumin.

Unit Size 100 µg

Storage Instructions Aliquot and store at -20°C. Minimize freezing and thawing.

Synonym /

Alias Names OTTHUMP00000028981|SH3 domain binding protein 1|SH3-domain binding protein 1|SH3BP1

Usage	Immunocytochemistry: This antibody has proved to work very well in Caco-2 cells in Elbediwy et
Summary	al, J.Biol. Chem, 2012 (in press).
Accession ID	NP_061830.3
Blocking Peptide	EBP06271
Immunogen	Peptide with sequence C-PQPRPRSLASETN, from the C Terminus of the protein sequence according to NP_061830.3.
Peptide Sequence	C-PQPRPRSLASETN
Purification Method	Purified from goat serum by ammonium sulphate precipitation followed by antigen affinity chromatography using the immunizing peptide.
Shipping Instructions	Refrigerated
Predicted Species	Human
Reactive Species	Human
Human Gene ID	23616
Product Grade	https://prod-vector-labs-pimcore-assets.s3.us-east-1.amazonaws.com/assets/products/image/elite_plus_medium.png
IHC Results	In paraffin embedded Human Kidney, stains the cytoplasm of lymphoid cells in the interstitial parenchyma and of lymphocytes in a glomerulus. Recommended concentration: 0.3µg/ml.
ELISA	
Detection Limit	Antibody detection limit dilution 1:16000.
Western Blot	Approx 70kDa band observed in Human Lung and Kidney lysates (calculated MW of 75.7kDa according to NP_061830.3). Recommended for use at 1-3µg/ml.
Application Type	Pep-ELISA, WB, IHC, ICC, IF

SELECTED REFERENCES

[{"pmid": 21658605, "intro": "**This antibody has been successfully used in Time-lapse microscopy on Rat:**", "title": "SH3BP1, an exocyst-associated RhoGAP, inactivates Rac1 at the front to drive cell motility.", "author": "Parrini MC, Sadou-Dubourgnoux A, Aoki K, Kunida K, Biondini M, Hatzoglou A, Pouillet P, Formstecher E, Yeaman C, Matsuda M, Rossé C, Camonis J.", "journal": "Mol Cell. 2011 Jun 10;42(5):650-61."}]

DOCUMENTS

- [Data Sheet](#)

GALLERY IMAGES

