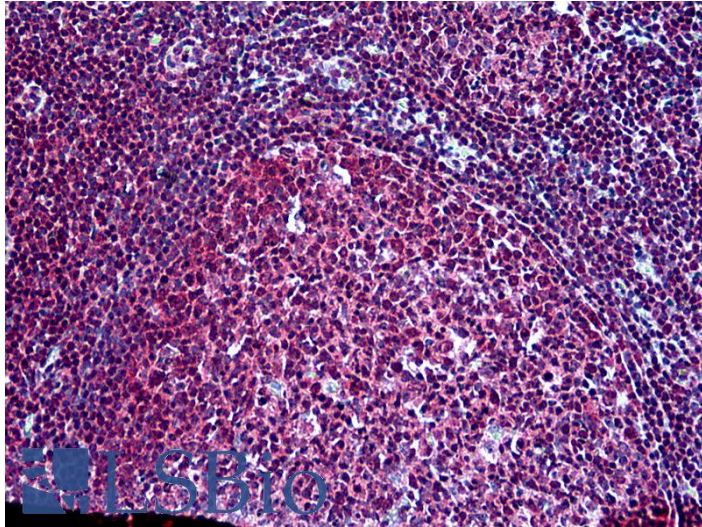




GOAT ANTI-SH3KBP1 (N TERMINUS) ANTIBODY

SKU: EB05436



SPECIFICATIONS

Formulation Supplied at 0.5 mg/ml in Tris saline, 0.02% sodium azide, pH7.3 with 0.5% bovine serum albumin.

Unit Size 100 µg

Storage Instructions Aliquot and store at -20°C. Minimize freezing and thawing.

Synonym / Alias Names src-related kinase binding protein-1| migration-inducing gene 18| human Src family kinase-binding protein 1| cbl-interacting protein of 85 kDa| c-Cbl-interacting protein| Src family kinase-binding protein 1| SH3 domain-containing kinase-binding protein 1| OTTHUMP00000023028| OTTHUMP00000023025| OTTHUMP00000023024| OTTHUMP00000023022| CD2-binding protein 3| MIG18| HSB1| HSB-1| GIG10| CIN85| CD2BP3| RP11-345L8.1| SH3-domain kinase binding protein 1|SH3KBP1

Accession ID NP_114098.1

Blocking Peptide EBP05436

Immunogen Peptide with sequence VEAIVEFDYQAQH-C, from the N Terminus of the protein sequence according to NP_114098.1.

Product Comments This antibody is expected to recognize isoform a (NP_114098.1) only.

Peptide Sequence VEAIVEFDYQAQH-C



Purification Method	Purified from goat serum by ammonium sulphate precipitation followed by antigen affinity chromatography using the immunizing peptide.
Shipping Instructions	Refrigerated
Predicted Species	Human, Mouse, Rat, Dog, Cow
Reactive Species	Human
Human Gene ID	30011
Mouse Gene ID	58194
Rat Gene ID	84357
Product Grade	https://prod-vector-labs-pimcore-assets.s3.us-east-1.amazonaws.com/assets/products/image/elite_medium.png
IHC Results	Paraffin embedded Human Spleen, Tonsil and Placenta. Recommended concentration: 2.5µg/ml.
ELISA	
Detection Limit	Antibody detection limit dilution 1:4000.
Application Type	Pep-ELISA, IHC

DOCUMENTS

- [Data Sheet](#)

GALLERY IMAGES

