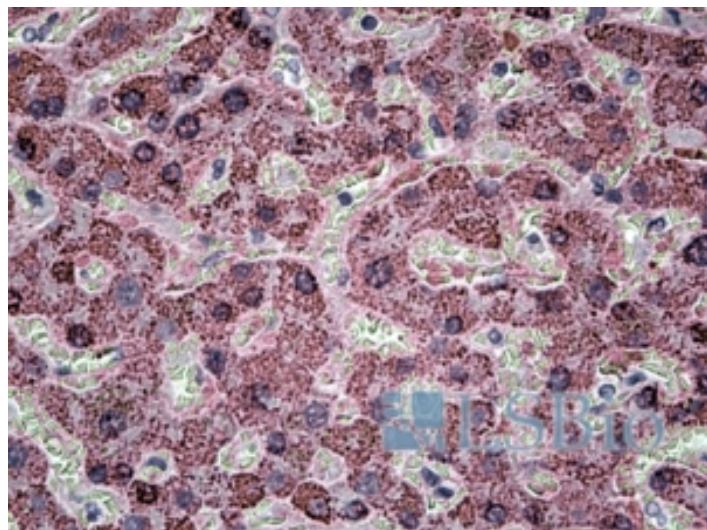


# GOAT ANTI-SH3PXD2A ANTIBODY

**SKU:** EB10002



## SPECIFICATIONS

**Formulation** Supplied at 0.5 mg/ml in Tris saline, 0.02% sodium azide, pH7.3 with 0.5% bovine serum albumin.

**Unit Size** 100 µg

**Storage Instructions** Aliquot and store at -20°C. Minimize freezing and thawing.

**Synonym /**

**Alias Names** SH3PXD2A|SH3MD1|SH3 multiple domains 1|SH3 and PX domains 2A|five SH3 domains|FISH

**Accession ID** NP\_055446.2

**Blocking Peptide** EBP10002

**Immunogen** Peptide with sequence C-KPIEKSQFIHNNLK, from the internal region of the protein sequence according to NP\_055446.2.

**Peptide Sequence** C-KPIEKSQFIHNNLK

**Purification Method** Purified from goat serum by ammonium sulphate precipitation followed by antigen affinity chromatography using the immunizing peptide.

**Shipping Instructions** Refrigerated

<b>Predicted Species</b>	Human, Mouse, Rat, Dog, Pig
<b>Reactive Species</b>	Human
<b>Human Gene ID</b>	9644
<b>Mouse Gene ID</b>	14218
<b>Rat Gene ID</b>	309460
<b>Product Grade</b>	<a href="https://prod-vector-labs-pimcore-assets.s3.us-east-1.amazonaws.com/assets/products/image/elite_medium.png">https://prod-vector-labs-pimcore-assets.s3.us-east-1.amazonaws.com/assets/products/image/elite_medium.png</a>
<b>IHC Results</b>	In paraffin embedded Human Liver shows strong vesicular staining in the cytoplasm of hepatocytes. Recommended concentration, 3-6µg/ml.
<b>ELISA</b>	
<b>Detection Limit</b>	Antibody detection limit dilution 1:16000.
<b>Application Type</b>	Pep-ELISA, IHC

## DOCUMENTS

- [Data Sheet](#)

## GALLERY IMAGES

