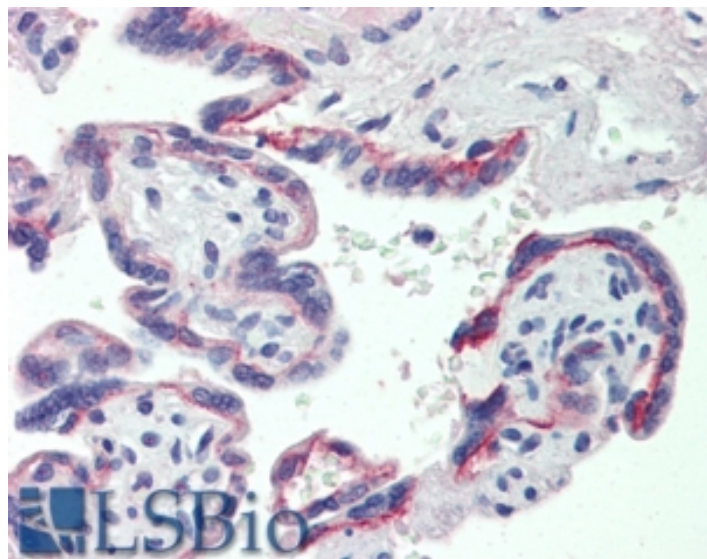


GOAT ANTI-SHBG ANTIBODY

SKU: EB09042



SPECIFICATIONS

Formulation Supplied at 0.5 mg/ml in Tris saline, 0.02% sodium azide, pH7.3 with 0.5% bovine serum albumin.

Unit Size 100 µg

Storage Instructions Aliquot and store at -20°C. Minimize freezing and thawing.

Synonym /

Alias Names androgen binding protein|TEBG|MGC138391|MGC126834|ABP|sex hormone-binding globulin|SHBG

Accession ID NP_001031.2

Blocking Peptide EBP09042

Immunogen Peptide with sequence HSCPQSPGNGTDAS, from the C Terminus of the protein sequence according to NP_001031.2.

Peptide Sequence HSCPQSPGNGTDAS

Purification Method Purified from goat serum by ammonium sulphate precipitation followed by antigen affinity chromatography using the immunizing peptide.

Shipping Instructions Refrigerated

Predicted Species	Human
Reactive Species	Human
Human Gene ID	6462
Product Grade	https://prod-vector-labs-pimcore-assets.s3.us-east-1.amazonaws.com/assets/products/image/elite_medium.png
IHC Results	In paraffin embedded Human Placenta shows cytoplasm staining of cytotrophoblasts. Recommended concentration, 4-6µg/ml.
ELISA	
Detection Limit	Antibody detection limit dilution 1:8000.
Application Type	Pep-ELISA, IHC

DOCUMENTS

- [Data Sheet](#)

GALLERY IMAGES

