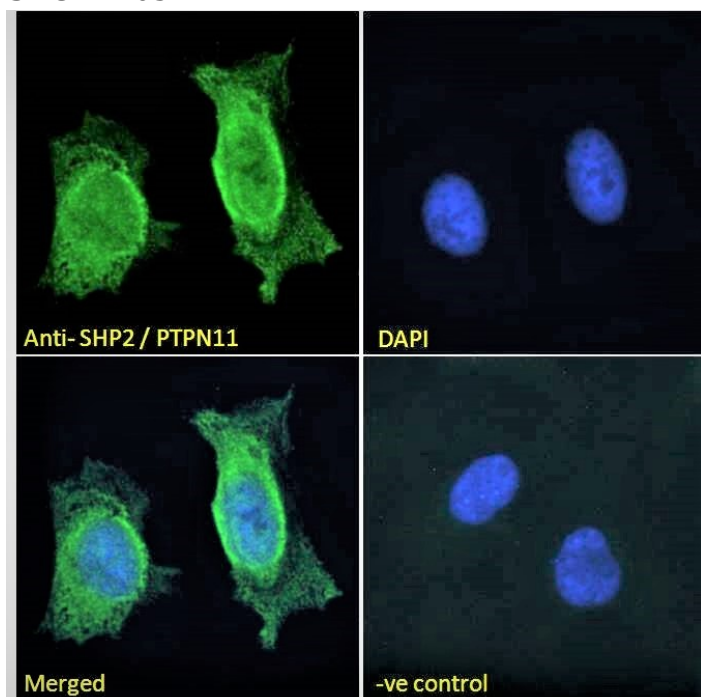


GOAT ANTI-SHP2 / PTPN11 ANTIBODY

SKU: EB05114



SPECIFICATIONS

Formulation Supplied at 0.5 mg/ml in Tris saline, 0.02% sodium azide, pH7.3 with 0.5% bovine serum albumin.

Unit Size 100 µg

Storage Instructions Aliquot and store at -20°C. Minimize freezing and thawing.

Synonym / Alias Names protein tyrosine phosphatase-2|MGC14433|protein tyrosine phosphatase, non-receptor type 11|protein-tyrosine phosphatase 2C|Noonan syndrome 1|SH-PTP3|SH-PTP2|PTP-1D|SHP-2|PTP2C|BPTP3|NS1|CFC|protein tyrosine phosphatase, non-receptor type 11 (Noonan syndrome 1)|SHP2|PTPN11

Usage Summary **Immunofluorescence:** Strong expression of the protein seen in the nuclei and cytoplasm of HeLa cells. Recommended concentration: 10µg/ml. **Flow Cytometry:** Flow cytometric analysis of A431 cells. Recommended concentration: 10ug/ml.

Accession ID NP_002825.3; NP_001317366.1

Blocking Peptide EBP05114

Immunogen Peptide with sequence C-YENVGLMQQKSFRR, from the C Terminus of the protein sequence according to NP_002825.3; NP_001317366.1.

Peptide Sequence	C-YENVGLMQQKSFR
Purification Method	Purified from goat serum by ammonium sulphate precipitation followed by antigen affinity chromatography using the immunizing peptide.
Shipping Instructions	Refrigerated
Predicted Species	Human, Mouse, Rat, Pig, Cow
Reactive Species	Human
Human Gene ID	5781
Mouse Gene ID	19247
Rat Gene ID	25622
Product Grade	https://prod-vector-labs-pimcore-assets.s3.us-east-1.amazonaws.com/assets/products/image/elite_plus_medium.png
ELISA Detection Limit	Antibody detection limit dilution 1:128000.
Western Blot	Approx 70kDa band observed in Human Muscle lysates (calculated MW of 68.0kDa according to NP_002825.3). Recommended concentration: 1-3µg/ml. Primary incubation 1 hour at room temperature.
Application Type	Pep-ELISA, WB, IF, FC

DOCUMENTS

- [Data Sheet](#)

GALLERY IMAGES

