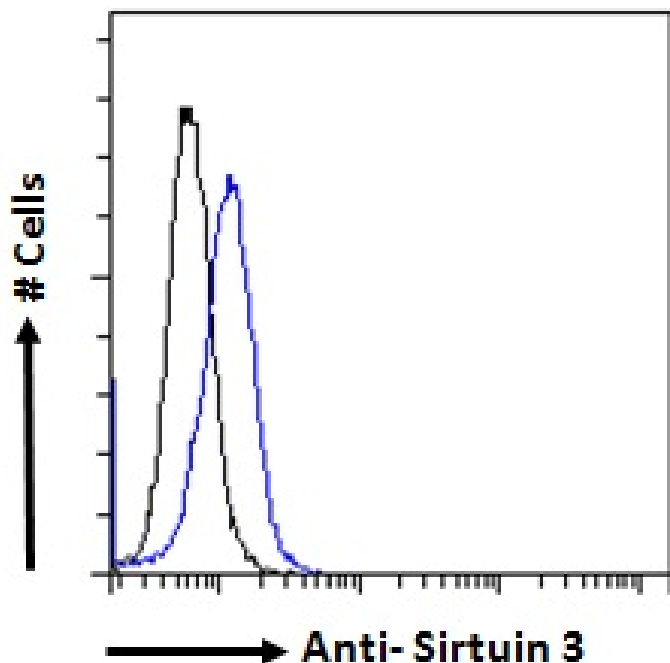


# GOAT ANTI-SIRTUIN 3 (MOUSE) ANTIBODY

SKU: EB10970



## SPECIFICATIONS

<b>Formulation</b>	Supplied at 0.5 mg/ml in Tris saline, 0.02% sodium azide, pH7.3 with 0.5% bovine serum albumin.
<b>Unit Size</b>	100 µg
<b>Storage Instructions</b>	Aliquot and store at -20°C. Minimize freezing and thawing.
<b>Synonym / Alias Names</b>	SIR2-like protein 3  OTTMUSP00000027445  OTTMUSP00000027444  OTTMUSP00000027441  NAD-dependent deacetylase sirtuin-3  Sir2l3  A1848213  2310003L23Rik  homolog) 3  sirtuin 3 (silent mating type information regulation 2  sirtuin 3 Sirt3
<b>Usage Summary</b>	<p><b>Immunofluorescence:</b> Strong expression of the protein seen in the cytoplasm of NIH3T3 cells.</p> <p><b>Flow Cytometry:</b> Flow cytometric analysis of NIH3T3 cells. Recommended concentration: 10ug/ml.</p>
<b>Accession ID</b>	NP_071878.2; NP_001171275.1
<b>Blocking Peptide</b>	EBP10970
<b>Immunogen</b>	Peptide with sequence C-RASGIPASKLVEAH, from the internal region of the protein sequence according to NP_071878.2; NP_001171275.1.

<b>Product</b>	This antibody is expected to recognize both reported isoforms (NP_071878.2; NP_001171275.1). Reported variants
<b>Comments</b>	represent identical proteins: NP_071878.2; NP_001120823.1
<b>Peptide Sequence</b>	C-RASGIPASKLVEAH
<b>Purification Method</b>	Purified from goat serum by ammonium sulphate precipitation followed by antigen affinity chromatography using the immunizing peptide.
<b>Shipping Instructions</b>	Refrigerated
<b>Predicted Species</b>	Human, Mouse, Rat, Pig
<b>Reactive Species</b>	Mouse
<b>Human Gene ID</b>	23410
<b>Mouse Gene ID</b>	64384
<b>Rat Gene ID</b>	293615
<b>Product Grade</b>	<a href="https://prod-vector-labs-pimcore-assets.s3.us-east-1.amazonaws.com/assets/products/image/elite_plus_medium.png">https://prod-vector-labs-pimcore-assets.s3.us-east-1.amazonaws.com/assets/products/image/elite_plus_medium.png</a>
<b>ELISA Detection Limit</b>	Antibody detection limit dilution 1:64000.
<b>Western Blot</b>	Approx 30kDa band observed in Mouse Heart lysates (calculated MW of 28.8kDa according to NP_071878.2). An additional band of unknown identity was also consistently observed at 15kDa. This band was successfully blocked by incubation with the immunizing peptide. Recommended concentration: 1-3µg/ml. Primary incubation 1 hour at room temperature. Preliminary testing was unsuccessful on Rat Kidney for this particular batch.
<b>Application Type</b>	Pep-ELISA, WB, IF, FC

## DOCUMENTS

- [Data Sheet](#)

## GALLERY IMAGES

