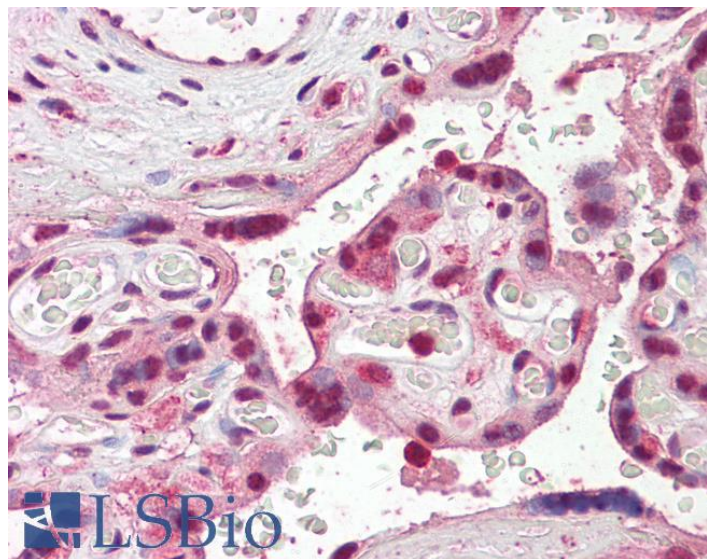


GOAT ANTI-SKA3 ANTIBODY

SKU: EB09603



SPECIFICATIONS

Formulation Supplied at 0.5 mg/ml in Tris saline, 0.02% sodium azide, pH7.3 with 0.5% bovine serum albumin.

Unit Size 100 µg

Storage Instructions Aliquot and store at -20°C. Minimize freezing and thawing.

Synonym /

Alias C13orf3|chromosome 13 open reading frame 3|MGC4832|RAMA1|SKA3

Names

Accession ID NP_659498.3

Blocking Peptide EBP09603

Immunogen Peptide with sequence C-PLSKTNSSNDLE, from the internal region of the protein sequence according to NP_659498.3.

Peptide Sequence C-PLSKTNSSNDLE

Purification Method Purified from goat serum by ammonium sulphate precipitation followed by antigen affinity chromatography using the immunizing peptide.

Shipping Instructions Refrigerated

Predicted Species	Human, Mouse, Rat, Dog
Reactive Species	Human
Human Gene ID	221150
Mouse Gene ID	219114
Rat Gene ID	361047
Product Grade	https://prod-vector-labs-pimcore-assets.s3.us-east-1.amazonaws.com/assets/products/image/elite_medium.png
IHC Results	Paraffin embedded Human Placenta. Recommended concentration: 3.75µg/ml.
ELISA	
Detection Limit	Antibody detection limit dilution 1:64000.
Western Blot	Preliminary experiments gave an approx 35kDa and 150kDa band in HeLa lysates after 2µg/ml antibody staining. Please note that currently we cannot find an explanation in the literature for the bands we observe given the calculated size of 46.4kDa according to NP_659498.3. Both bands were successfully blocked by incubation with the immunizing peptide.
Application Type	Pep-ELISA, IHC

DOCUMENTS

- [Data Sheet](#)

GALLERY IMAGES

