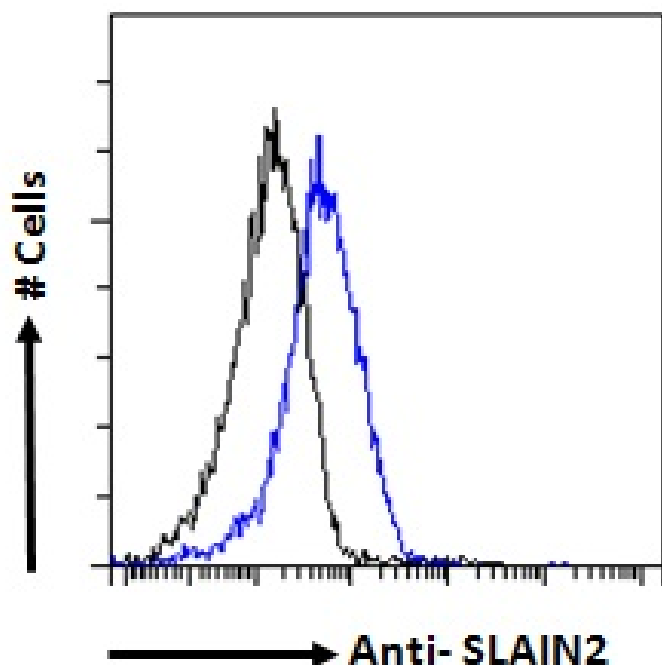


GOAT ANTI-SLAIN2 ANTIBODY

SKU: EB09470



SPECIFICATIONS

Unit Size	100 µg
Synonym /	
Alias	KIAA1458 FLJ21611 SLAIN motif family, member 2 SLAIN2
Names	
Usage	Flow Cytometry: Flow cytometric analysis of NIH3T3 cells. Recommended concentration:
Summary	10ug/ml.
Accession	
ID	NP_065897.1
Blocking	
Peptide	EBP09470
Immunogen	Peptide with sequence C-QVDSVKSSRSDSNFQ, from the internal region of the protein sequence according to NP_065897.1.
Peptide	
Sequence	C-QVDSVKSSRSDSNFQ

Shipping Instructions	Refrigerated
Predicted Species	Human, Mouse, Rat, Dog, Cow
Reactive Species	Mouse
Human Gene ID	57606
Mouse Gene ID	75991
Rat Gene ID	305310
Product Grade	https://prod-vector-labs-pimcore-assets.s3.us-east-1.amazonaws.com/assets/products/image/elite_medium.png
ELISA	
Detection Limit	Antibody detection limit dilution 1:64000.
Application Type	Pep-ELISA, FC

DOCUMENTS

- [Data Sheet](#)

GALLERY IMAGES

