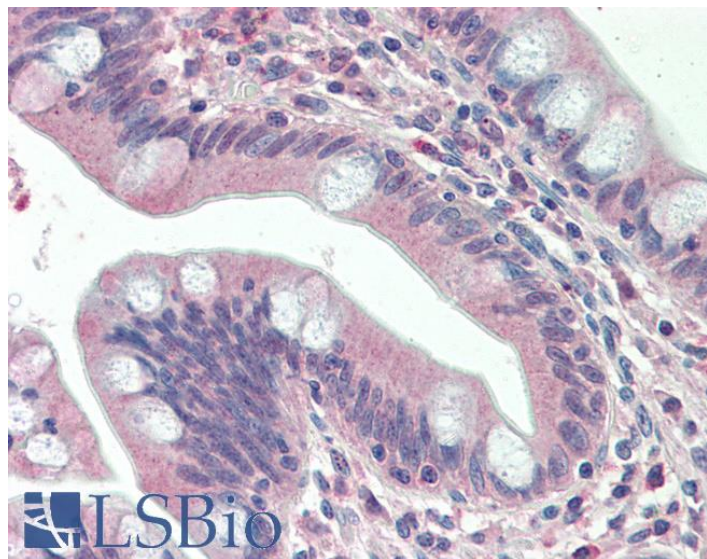


GOAT ANTI-SLAMF8 ANTIBODY

SKU: EB10496



SPECIFICATIONS

Formulation Supplied at 0.5 mg/ml in Tris saline, 0.02% sodium azide, pH7.3 with 0.5% bovine serum albumin.

Unit Size 100 µg

Storage Instructions Aliquot and store at -20°C. Minimize freezing and thawing.

Synonym / Alias Names SLAMF8|SLAM family member 8|SBB142|MGC129578|FLJ20442|BLAME|BCM-like membrane protein|B lymphocyte activator macrophage expressed

Accession ID NP_064510.1

Blocking Peptide EBP10496

Immunogen Peptide with sequence C-HADRVGPETENP, from the C Terminus of the protein sequence according to NP_064510.1.

Peptide Sequence C-HADRVGPETENP

Purification Method Purified from goat serum by ammonium sulphate precipitation followed by antigen affinity chromatography using the immunizing peptide.

Shipping Instructions Refrigerated

Predicted Species	Human
Reactive Species	Human
Human Gene ID	56833
Product Grade	https://prod-vector-labs-pimcore-assets.s3.us-east-1.amazonaws.com/assets/products/image/elite_medium.png
IHC Results	Paraffin embedded Human Small Intestine. Recommended concentration: 5µg/ml.
ELISA Detection Limit	Antibody detection limit dilution 1:32000.
Western Blot	In transfected HEK293 transiently expressing Human SLAMF8 a band of approx. 45kDa is observed. This band is not observed in the non-transfected HEK293. The calculated molecular size is 31.7kDa according to NP_064510.1. Recommended concentration, 0.01-0.03µg/ml.
Application Type	Pep-ELISA, WB-Trf, IHC

DOCUMENTS

- [Data Sheet](#)

GALLERY IMAGES

