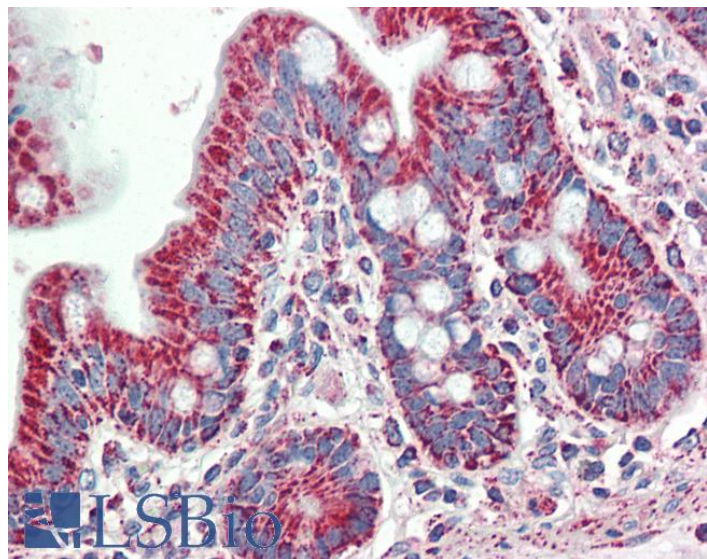


GOAT ANTI-SLAMF8 ANTIBODY

SKU: EB10495



SPECIFICATIONS

Formulation Supplied at 0.5 mg/ml in Tris saline, 0.02% sodium azide, pH7.3 with 0.5% bovine serum albumin.

Unit Size 100 µg

Storage Instructions Aliquot and store at -20°C. Minimize freezing and thawing.

Synonym / Alias Names B lymphocyte activator macrophage expressed|BCM-like membrane protein|BLAME|FLJ20442|MGC129578|SBB142|SLAM family member 8|SLAMF8

Accession ID NP_064510.1

Blocking Peptide EBP10495

Immunogen Peptide with sequence C-TLYHSRFLGRAQ, from the internal region of the protein sequence according to NP_064510.1.

Peptide Sequence C-TLYHSRFLGRAQ

Purification Method Purified from goat serum by ammonium sulphate precipitation followed by antigen affinity chromatography using the immunizing peptide.

Shipping Instructions Refrigerated

Predicted Species	Human, Mouse, Rat, Cow
Reactive Species	Human
Human Gene ID	56833
Mouse Gene ID	74748
Rat Gene ID	289237
Product Grade	https://prod-vector-labs-pimcore-assets.s3.us-east-1.amazonaws.com/assets/products/image/elite_medium.png
IHC Results	Paraffin embedded Human Small Intestine. Recommended concentration: 5µg/ml.
ELISA	
Detection Limit	Antibody detection limit dilution 1:8000.
Western Blot	In transfected HEK293 transiently expressing Human SLAMF8 (myc and DYKDDDDK tagged), a band of approx. 45kDa is observed. No bands are observed in mock-transfected HEK293 and the same band is observed using anti-myc antibody. Recommended concentration: 0.5-1µg/ml.
Application Type	Pep-ELISA, WB, IHC

DOCUMENTS

- [Data Sheet](#)

GALLERY IMAGES

