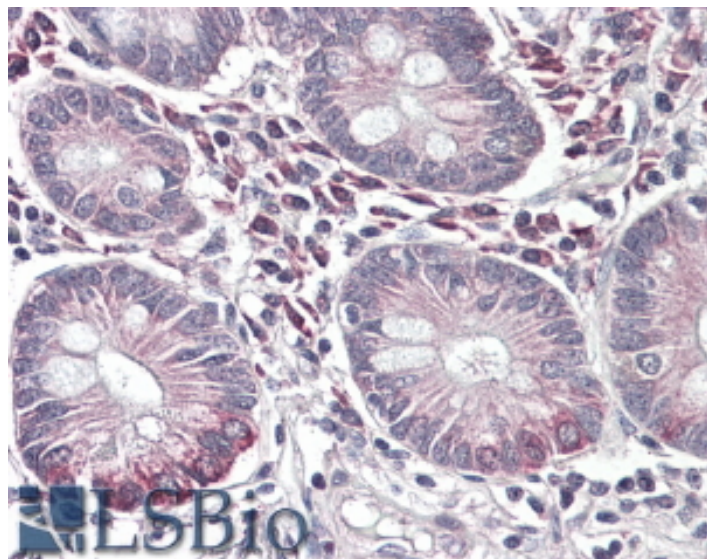


GOAT ANTI-SLC10A2 / ASBT ANTIBODY

SKU: EB08818



SPECIFICATIONS

Formulation Supplied at 0.5 mg/ml in Tris saline, 0.02% sodium azide, pH7.3 with 0.5% bovine serum albumin.

Unit Size 100 µg

Storage Instructions Aliquot and store at -20°C. Minimize freezing and thawing.

Synonym / Alias Names ileal sodium-dependent bile acid transporter|ileal apical sodium-dependent bile acid transporter|OTTHUMP00000040691|NTCP2|ISBT|solute carrier family 10 (sodium/bile acid cotransporter family), member 2|ASBT|SLC10A2

Accession ID NP_000443.1

Blocking Peptide EBP08818

Immunogen Peptide with sequence C-YKANGGFQPDEK, from the C Terminus of the protein sequence according to NP_000443.1.

Peptide Sequence C-YKANGGFQPDEK

Purification Method Purified from goat serum by ammonium sulphate precipitation followed by antigen affinity chromatography using the immunizing peptide.

Shipping Instructions Refrigerated

Predicted Species	Human
Reactive Species	Human
Human Gene ID	6555
Product Grade	https://prod-vector-labs-pimcore-assets.s3.us-east-1.amazonaws.com/assets/products/image/elite_medium.png
IHC Results	In paraffin embedded Human Small Intestine shows staining of cells in the lamina propria between the intestinal villi. Recommended concentration: 3-6µg/ml.
ELISA	
Detection Limit	Antibody detection limit dilution 1:16000.
Western Blot	Preliminary experiments gave an approx. 60kDa band in Human Kidney lysates after 0.1µg/ml antibody staining. Please note that currently we cannot find an explanation in the literature for the band we observe given the calculated size of 37.7kDa according to NP_000443.1. The 60kDa band was successfully blocked by incubation with the immunizing peptide.
Application Type	Pep-ELISA, IHC

DOCUMENTS

- [Data Sheet](#)

GALLERY IMAGES

