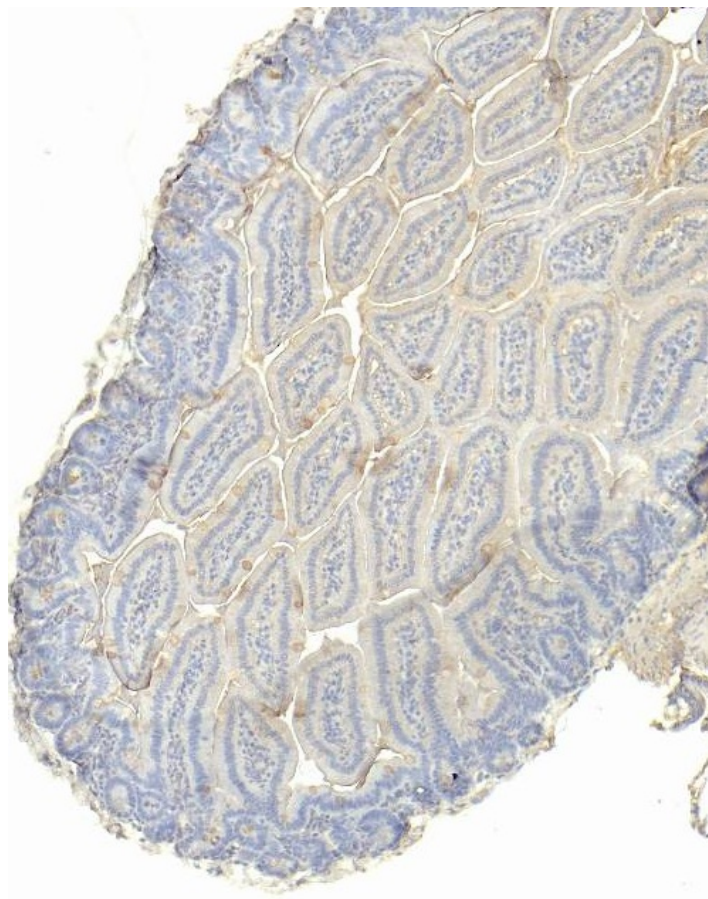


GOAT ANTI-SLC10A2 (MOUSE) ANTIBODY

SKU: EB08819



SPECIFICATIONS

Formulation Supplied at 0.5 mg/ml in Tris saline, 0.02% sodium azide, pH7.3 with 0.5% bovine serum albumin.

Unit Size 100 µg

Storage Instructions Aliquot and store at -20°C. Minimize freezing and thawing.

Synonym / Alias Names solute carrier family 10, member 2|ileal sodium-dependent bile acid transporter|ileal apical sodium-dependent bile acid transporter|ISBT|ASBT|solute carrier family 10 (sodium/bile acid cotransporter family), member 2|Slc10a2

Accession ID NP_035518.1

Blocking Peptide	EBP08819
Immunogen	Peptide with sequence C-DETNRKGFQPEK, from the C Terminus of the protein sequence according to NP_035518.1.
Peptide Sequence	C-DETNRKGFQPEK
Purification Method	Purified from goat serum by ammonium sulphate precipitation followed by antigen affinity chromatography using the immunizing peptide.
Shipping Instructions	Refrigerated
Predicted Species	Mouse
Reactive Species	Mouse
Mouse Gene ID	20494
Rat Gene ID	29500
Product Grade	https://prod-vector-labs-pimcore-assets.s3.us-east-1.amazonaws.com/assets/products/image/elite_medium.png
IHC Results	Paraffin embedded Mouse Small Intestine. Recommended concentration: 5µg/ml.
ELISA Detection Limit	Antibody detection limit dilution 1:8000.
Western Blot	Approx. 35kDa band observed in Mouse Liver lysates (calculated MW of 38.1kDa according to NP_035518.1). Recommended concentration: 0.1-0.3µg/ml. Primary incubation 1 hour at room temperature.
Application Type	Pep-ELISA, WB, IHC

DOCUMENTS

- [Data Sheet](#)

GALLERY IMAGES

