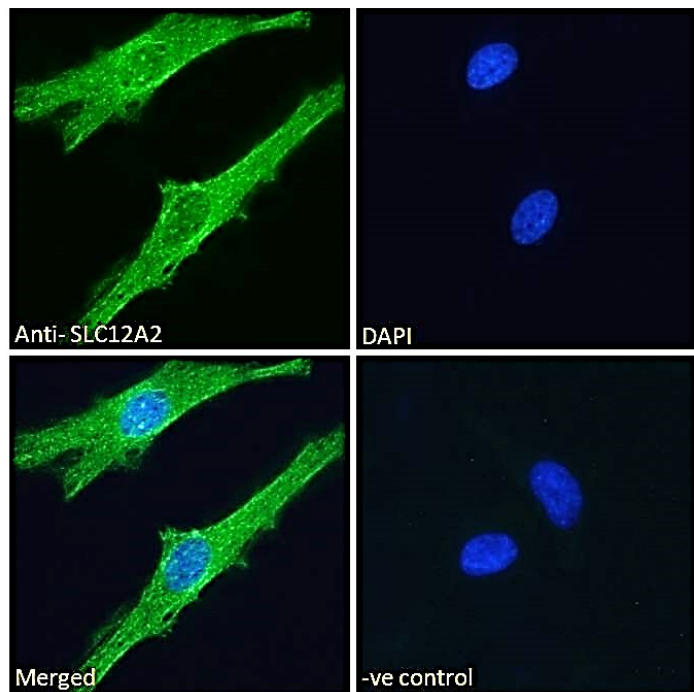


GOAT ANTI-SLC12A2 ANTIBODY

SKU: EB09783



SPECIFICATIONS

Formulation Supplied at 0.5 mg/ml in Tris saline, 0.02% sodium azide, pH7.3 with 0.5% bovine serum albumin.

Unit Size 100 µg

Storage Instructions Aliquot and store at -20°C. Minimize freezing and thawing.

Synonym / Alias Names SLC12A2|solute carrier family 12 (sodium/potassium/chloride transporters), member 2|NKCC1|MGC104233|bumetanide-sensitive sodium-(potassium)-chloride cotransporter 1|BSC2|BSC|basolateral Na-K-Cl symporter

Usage Summary **Immunofluorescence:** Strong expression of the protein seen in the cytoplasm/ vesicles of HeLa cells. Recommended concentration: 10µg/ml. **Flow Cytometry:** Flow cytometric analysis of HeLa cells. Recommended concentration: 10ug/ml.

Accession ID NP_001037.1; NP_001243390.1

Blocking Peptide EBP09783

Immunogen Peptide with sequence C-NALQHSIRLSGVEDH, from the internal region of the protein sequence according to NP_001037.1; NP_001243390.1.

Peptide Sequence	C-NALQHSIRLSGVEDH
Purification Method	Purified from goat serum by ammonium sulphate precipitation followed by antigen affinity chromatography using the immunizing peptide.
Shipping Instructions	Refrigerated
Predicted Species	Human, Mouse, Rat, Dog, Cow
Reactive Species	Human
Human Gene ID	6558
Mouse Gene ID	20496
Rat Gene ID	83629
Product Grade	https://prod-vector-labs-pimcore-assets.s3.us-east-1.amazonaws.com/assets/products/image/elite_plus_medium.png
IHC Results	In paraffin embedded Human Colon shows membranous staining. Recommended concentration: 3.75µg/ml.
ELISA	
Detection Limit	Antibody detection limit dilution 1:64000.
Application Type	Pep-ELISA, IHC, IF, FC

DOCUMENTS

- [Data Sheet](#)

GALLERY IMAGES

