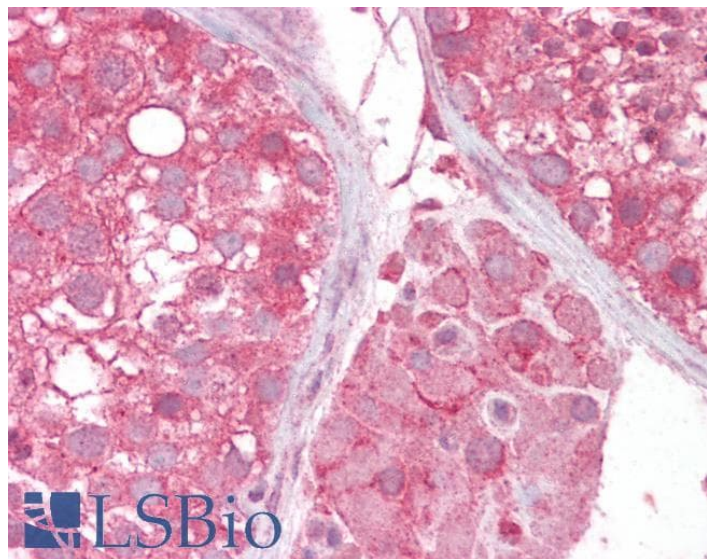


## GOAT ANTI-SLC16A7 / MCT2 ANTIBODY

**SKU:** EB05131



## SPECIFICATIONS

**Formulation** Supplied at 0.5 mg/ml in Tris saline, 0.02% sodium azide, pH7.3 with 0.5% bovine serum albumin.

**Unit Size** 100 µg

**Storage Instructions** Aliquot and store at -20°C. Minimize freezing and thawing.

**Synonym / Alias Names** solute carrier family 16, member 7|solute carrier family 16, member 7 (monocarboxylic acid transporter 2)|monocarboxylate transporter 2|MCT2|solute carrier family 16 (monocarboxylic acid transporters), member 7|SLC16A7

**Accession ID** NP\_004722.2

**Blocking Peptide** EBP05131

**Immunogen** Peptide with sequence C-SNAQSVTSERETNI, from the C Terminus of the protein sequence according to NP\_004722.2.

**Peptide Sequence** C-SNAQSVTSERETNI

**Purification Method** Purified from goat serum by ammonium sulphate precipitation followed by antigen affinity chromatography using the immunizing peptide.

**Shipping Instructions** Refrigerated

<b>Predicted Species</b>	Human
<b>Reactive Species</b>	Human
<b>Human Gene ID</b>	9194
<b>Product Grade</b>	<a href="https://prod-vector-labs-pimcore-assets.s3.us-east-1.amazonaws.com/assets/products/image/elite_medium.png">https://prod-vector-labs-pimcore-assets.s3.us-east-1.amazonaws.com/assets/products/image/elite_medium.png</a>
<b>IHC Results</b>	Paraffin embedded Human Testis. Recommended concentration: 2.5µg/ml.
<b>ELISA</b>	
<b>Detection Limit</b>	Antibody detection limit dilution 1:128000.
<b>Western Blot</b>	Approx 40-45kDa band observed in A549, lung epithelial (lung carcinoma) lysates (calculated MW of 52.2 kDa according to NP_004722). This molecular weight is routinely observed by other sources. Recommended concentration: 1-3µg/ml.
<b>Application Type</b>	Pep-ELISA, WB, IHC

## DOCUMENTS

- [Data Sheet](#)

## GALLERY IMAGES

