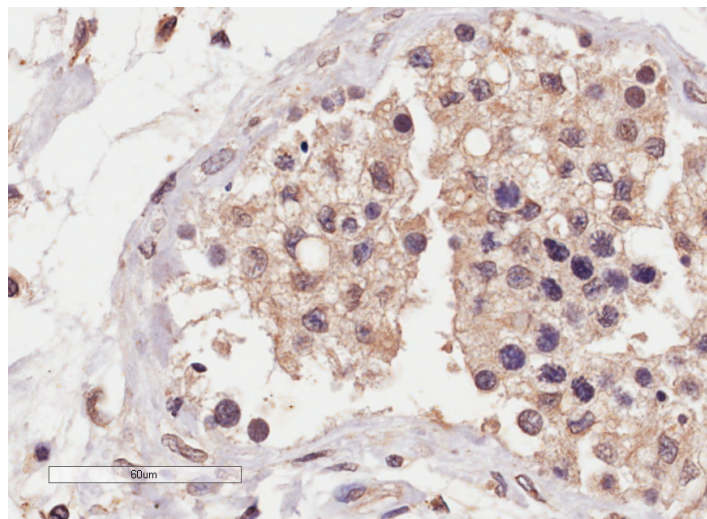


GOAT ANTI-SLC22A16 ANTIBODY

SKU: EB07474



SPECIFICATIONS

Formulation Supplied at 0.5 mg/ml in Tris saline, 0.02% sodium azide, pH7.3 with 0.5% bovine serum albumin.

Unit Size 100 µg

Storage Instructions Aliquot and store at -20°C. Minimize freezing and thawing.

Synonym / Alias Names solute carrier family 22, member 16|organic cation transporter 6|fly-like putative organic ion transporter 2|carnitine transporter 2|WUGSC:RG331P03.1|OTTHUMP00000040478|dJ261K5.1|OKB1|OCT6|FLIPT2|CT2|RP1-261K5.1|solute carrier family 22 (organic cation transporter), member 16|SLC22A16

Accession ID NP_149116.2

Blocking Peptide EBP07474

Immunogen Peptide with sequence CSRNKRENTSSL, from the internal region of the protein sequence according to NP_149116.2.

Peptide Sequence CSRNKRENTSSL

Purification Method Purified from goat serum by ammonium sulphate precipitation followed by antigen affinity chromatography using the immunizing peptide.

Shipping Instructions Refrigerated

Predicted Species	Human
Reactive Species	Human
Human Gene ID	85413
Product Grade	https://prod-vector-labs-pimcore-assets.s3.us-east-1.amazonaws.com/assets/products/image/elite_medium.png
IHC Results	In paraffin embedded Human testis shows membranous staining in the seminiferous tubules. Recommended concentration, 1-2µg/ml.
ELISA	
Detection Limit	Antibody detection limit dilution 1:128000.
Application Type	Pep-ELISA, IHC

DOCUMENTS

- [Data Sheet](#)

GALLERY IMAGES

