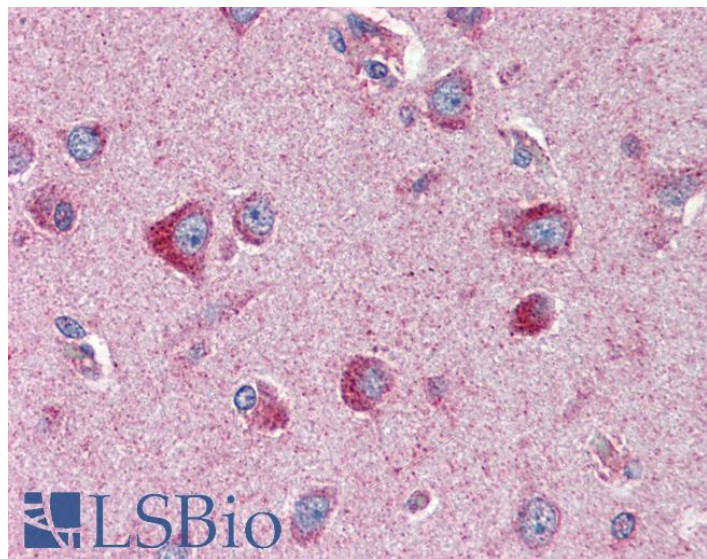


GOAT ANTI-SLC22A17 ANTIBODY

SKU: EB08816



SPECIFICATIONS

Formulation	Supplied at 0.5 mg/ml in Tris saline, 0.02% sodium azide, pH7.3 with 0.5% bovine serum albumin.
Unit Size	100 µg
Storage Instructions	Aliquot and store at -20°C. Minimize freezing and thawing.
Synonym / Alias Names	solute carrier family 22 (organic cation transporter), member 17 potent brain type organic ion transporter neutrophil gelatinase-associated lipocalin receptor NGAL receptor hBOIT NGALR BOIT BOCT solute carrier family 22, member 17 SLC22A17
Accession ID	NP_065105.2; NP_057693.3
Blocking Peptide	EBP08816
Immunogen	Peptide with sequence C-PETKRKLLPEVLRD, from the internal region of the protein sequence according to NP_065105.2; NP_057693.3.
Product Comments	This antibody is expected to recognize both reported isoforms NP_065105.2 and NP_057693.3).
Peptide Sequence	C-PETKRKLLPEVLRD
Purification Method	Purified from goat serum by ammonium sulphate precipitation followed by antigen affinity chromatography using the immunizing peptide.

Shipping Instructions	Refrigerated
Predicted Species	Human, Mouse, Rat, Dog, Cow
Reactive Species	Human
Human Gene ID	51310
Mouse Gene ID	59049
Rat Gene ID	305886
Product Grade	https://prod-vector-labs-pimcore-assets.s3.us-east-1.amazonaws.com/assets/products/image/elite_medium.png
IHC Results	Paraffin embedded Human Brain (Cortex and Cerebellum). Recommended concentration: 2µg/ml.
ELISA	
Detection Limit	Antibody detection limit dilution 1:64000.
Western Blot	Preliminary experiments gave an approx 150kDa band in Human Cerebellum lysates after 0.1µg/ml antibody staining. Please note that currently we cannot find an explanation in the literature for the band we observe given the calculated size of 57.7kDa according to NP_065105.2. The 150kDa band was successfully blocked by incubation with the immunizing peptide.
Application Type	Pep-ELISA, IHC

DOCUMENTS

- [Data Sheet](#)

GALLERY IMAGES

