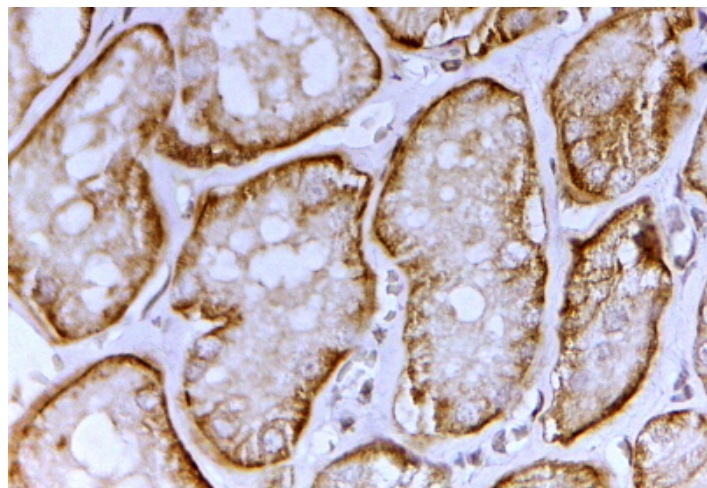


GOAT ANTI-SLC26A1 / SAT-1 ANTIBODY

SKU: EB12127



SPECIFICATIONS

Formulation Supplied at 0.5 mg/ml in Tris saline, 0.02% sodium azide, pH7.3 with 0.5% bovine serum albumin.

Unit Size 100 µg

Storage Instructions Aliquot and store at -20°C. Minimize freezing and thawing.

Synonym / Alias Names SLC26A1|solute carrier family 26 (sulfate transporter), member 1|EDM4|SAT-1|SAT1|sulfate anion transporter AT1|sulfate anion transporter 1|sulfate/anion transporter SAT-1 protein

Accession ID NP_071325.2; NP_602297.1

Blocking Peptide EBP12127

Immunogen Peptide with sequence C-QTARARHRELEATD, from the C Terminus of the protein sequence according to NP_071325.2; NP_602297.1.

Product Comments This antibody is expected to recognize reported isoform a (NP_071325.2) only. Reported variants represent identical protein: NP_998778.1, NP_071325.2

Peptide Sequence C-QTARARHRELEATD

Purification Method Purified from goat serum by ammonium sulphate precipitation followed by antigen affinity chromatography using the immunizing peptide.

Shipping Instructions Refrigerated

Predicted Species	Human
Reactive Species	Human
Human Gene ID	10861
Product Grade	https://prod-vector-labs-pimcore-assets.s3.us-east-1.amazonaws.com/assets/products/image/elite_medium.png
IHC Results	In paraffin embedded Human Kidney shows strong basal membrane staining in convoluted tubules. Recommended concentration, 2-4µg/ml.
ELISA	
Detection Limit	Antibody detection limit dilution 1:4000.
Application Type	Pep-ELISA, IHC

DOCUMENTS

- [Data Sheet](#)

GALLERY IMAGES

