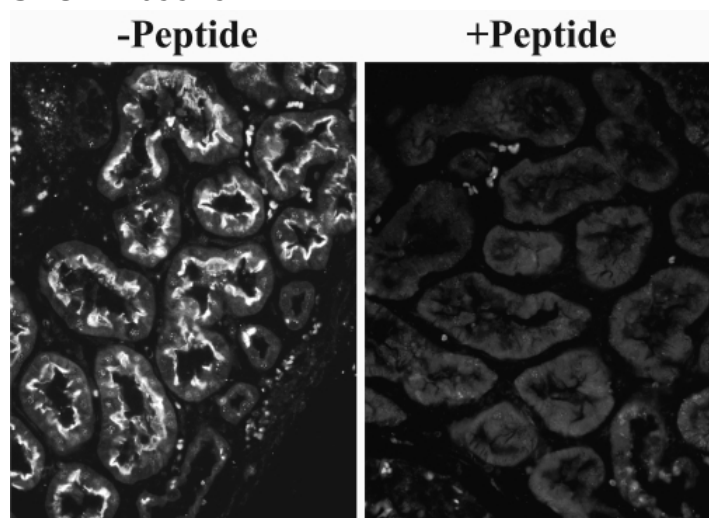


GOAT ANTI-SLC26A6 ANTIBODY

SKU: EB09929



SPECIFICATIONS

Formulation Supplied at 0.5 mg/ml in Tris saline, 0.02% sodium azide, pH7.3 with 0.5% bovine serum albumin.

Unit Size 100 µg

Storage Instructions Aliquot and store at -20°C. Minimize freezing and thawing.

Synonym / Alias Names SLC26A6|sulfate anion transporter|solute carrier family 26, member 6|pendrin-like protein 1|pendrin L1|DKFZp586E1422|anion transporter 1

Accession ID NP_075062.2; NP_599025.2; NP_602298.2; NP_001035544.1

Blocking Peptide EBP09929

Immunogen Peptide with sequence C-SAPRTHQWRT, from the internal region of the protein sequence according to NP_075062.2; NP_599025.2; NP_602298.2; NP_001035544.1.

Product Comments This antibody is expected to recognize isoform 1, 2, 3 and 4 (NP_075062.2; NP_599025.2; NP_602298.2; NP_001035544.1). Please note that this antibody was shown unfit for Mouse tissues both in IHC and WB.

Peptide Sequence C-SAPRTHQWRT

Purification Method Purified from goat serum by ammonium sulphate precipitation followed by antigen affinity chromatography using the immunizing peptide.

Shipping Instructions	Refrigerated
Predicted Species	Human
Reactive Species	Human
Human Gene ID	65010
Mouse Gene ID	171429
Product Grade	https://prod-vector-labs-pimcore-assets.s3.us-east-1.amazonaws.com/assets/products/image/elite_medium.png
IHC Results	In paraffin embedded Human Kidney showsstaining of brushborders along the entire proximal convoluted tubule. Recommended concentration, 0.1-0.3mg/ml. Please note the unusually low dilution required for this type of application!
ELISA	
Detection Limit	Antibody detection limit dilution 1:8000.
Western Blot	Approx 90kDa band observed in Human renal cortical brush-border membrane lysates (calculated MW of 83.0kDa according to NP_075062.2). Recommended concentration: 10µg/ml for overnight incubation.
Application Type	Pep-ELISA, WB, IHC

DOCUMENTS

- [Data Sheet](#)

GALLERY IMAGES

