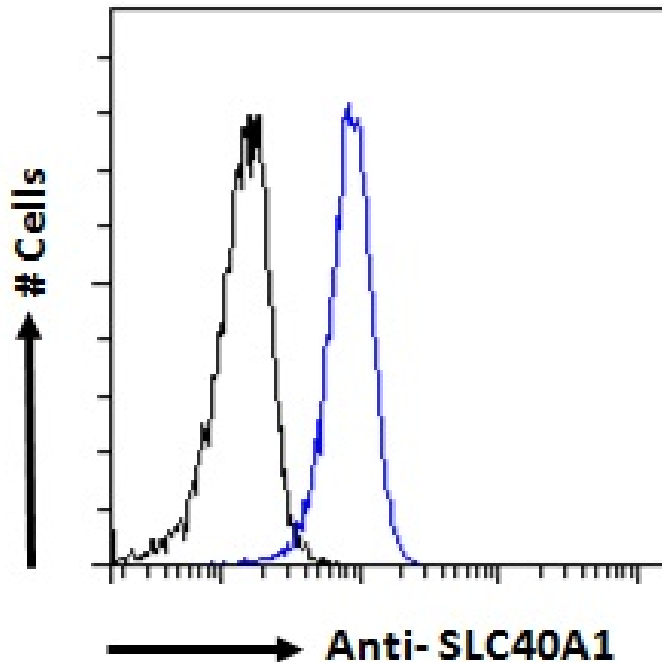




GOAT ANTI-SLC40A1 (AA245-259) ANTIBODY

SKU: EB12056



SPECIFICATIONS

Formulation Supplied at 0.5 mg/ml in Tris saline, 0.02% sodium azide, pH7.3 with 0.5% bovine serum albumin.

Unit Size 100 µg

Storage Instructions Aliquot and store at -20°C. Minimize freezing and thawing.

Synonym / Alias Names solute carrier family 40 member 1|solute carrier family 11 (proton-coupled divalent metal ion transporters), member 3|putative ferroportin 1 variant IIIB|iron regulated gene 1|SLC11A3|MTP1|MST079|IREG1|HFE4|FPN1|solute carrier family 40 (iron-regulated transporter), member 1|SLC40A1

Usage Summary **Immunofluorescence:** Strong expression of the protein seen in the cytoplasm and plasma membranes of HeLa cells. Recommended concentration: 10µg/ml. **Flow Cytometry:** Flow cytometric analysis of HeLa cells. Recommended concentration: 10ug/ml.

Accession ID NP_055400.1

Blocking Peptide EBP12056



Immunogen	Peptide with sequence C-ELKQLNLHKDTEPKP, from the internal region of the protein sequence according to NP_055400.1.
Peptide Sequence	C-ELKQLNLHKDTEPKP
Purification Method	Purified from goat serum by ammonium sulphate precipitation followed by antigen affinity chromatography using the immunizing peptide.
Shipping Instructions	Refrigerated
Predicted Species	Human
Reactive Species	Human
Human Gene ID	30061
Product Grade	https://prod-vector-labs-pimcore-assets.s3.us-east-1.amazonaws.com/assets/products/image/elite_medium.png
ELISA Detection Limit	Antibody detection limit dilution 1:128000.
Western Blot	Preliminary testing showed a band at approx 60kDa in Human Breast and Colon lysate after 1-2µg/ml antibody staining (calculated MW of 62.5kDa according to NP_055400.1). Primary incubation 1 hour at room temperature.
Application Type	Pep-ELISA, IF, FC

DOCUMENTS

- [Data Sheet](#)

GALLERY IMAGES

