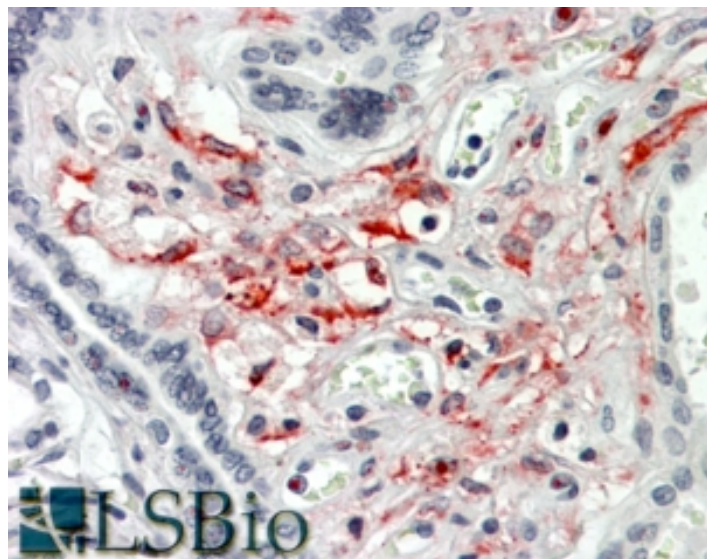


GOAT ANTI-SLC46A1 / PCFT ANTIBODY

SKU: EB08490



SPECIFICATIONS

Formulation Supplied at 0.5 mg/ml in Tris saline, 0.02% sodium azide, pH7.3 with 0.5% bovine serum albumin.

Unit Size 100 µg

Storage Instructions Aliquot and store at -20°C. Minimize freezing and thawing.

Synonym / Alias Names solute carrier family 46, member 1|proton-coupled folate transporter|heme carrier protein 1|PCFT|MGC9564|HCP1|solute carrier family 46 (folate transporter), member 1|SLC46A1

Accession ID NP_542400.2

Blocking Peptide EBP08490

Immunogen Peptide with sequence YNGTRQRGGCSNRS, from the internal region of the protein sequence according to NP_542400.2.

Peptide Sequence YNGTRQRGGCSNRS

Purification Method Purified from goat serum by ammonium sulphate precipitation followed by antigen affinity chromatography using the immunizing peptide.

Shipping Instructions Refrigerated

Predicted Species	Human
Reactive Species	Human
Human Gene ID	113235
Product Grade	https://prod-vector-labs-pimcore-assets.s3.us-east-1.amazonaws.com/assets/products/image/elite_medium.png
IHC Results	In paraffin embedded Human Placenta shows cytoplasm staining of mesenchymal cells. Recommended concentration, 3-5µg/ml.
ELISA	
Detection Limit	Antibody detection limit dilution 1:8000.
Application Type	Pep-ELISA, IHC

DOCUMENTS

- [Data Sheet](#)

GALLERY IMAGES

