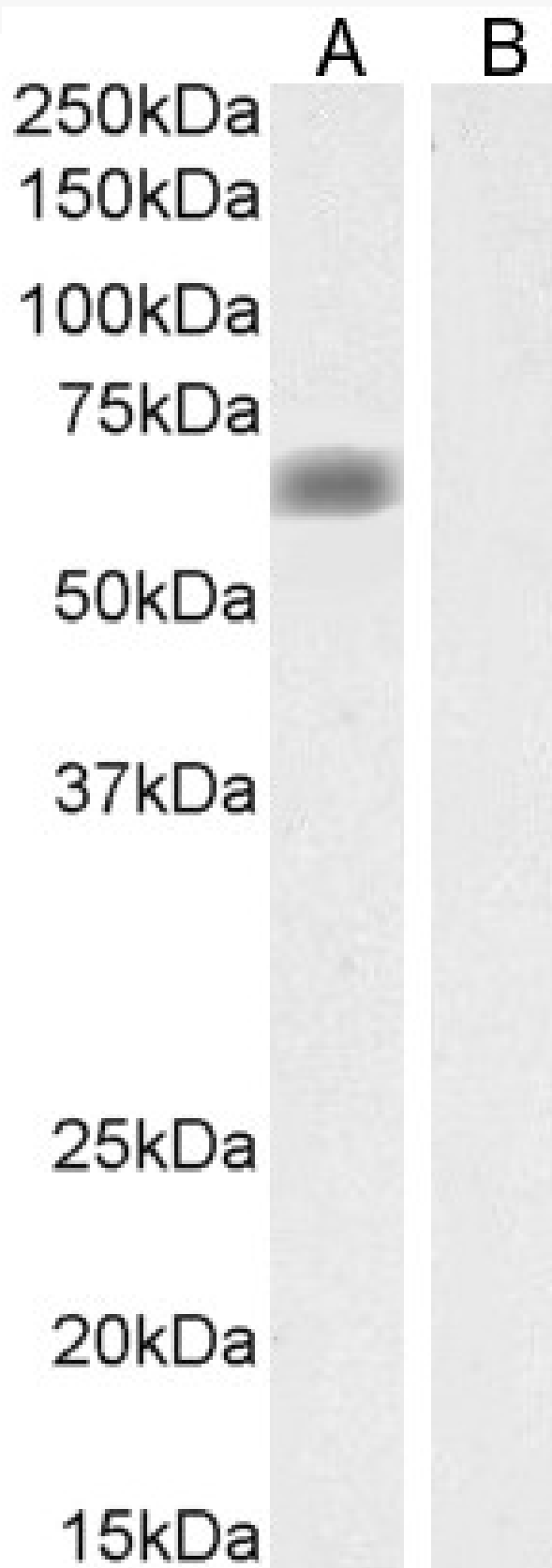


GOAT ANTI-SLC47A1 ANTIBODY

SKU: EB09191



SPECIFICATIONS

Formulation	Supplied at 0.5 mg/ml in Tris saline, 0.02% sodium azide, pH7.3 with 0.5% bovine serum albumin.
Unit Size	100 µg
Storage Instructions	Aliquot and store at -20°C. Minimize freezing and thawing.
Synonym / Alias Names	multidrug and toxin extrusion 1 MGC64822 MATE1 FLJ10847 solute carrier family 47, member 1 SLC47A1
Usage Summary	Immunofluorescence: Strong expression of the protein seen in the plasma membrane of HepG2 cells. Recommended concentration: 10µg/ml.
Accession ID	NP_060712.2
Blocking Peptide	EBP09191
Immunogen	Peptide with sequence C-PEHPQDGAKLSRKQ, from the internal region (near C Terminus) of the protein sequence according to NP_060712.2.
Peptide Sequence	C-PEHPQDGAKLSRKQ
Purification Method	Purified from goat serum by ammonium sulphate precipitation followed by antigen affinity chromatography using the immunizing peptide.
Shipping Instructions	Refrigerated
Predicted Species	Human
Reactive Species	Human
Human Gene ID	55244
Product Grade	https://prod-vector-labs-pimcore-assets.s3.us-east-1.amazonaws.com/assets/products/image/elite_medium.png
ELISA Detection Limit	Antibody detection limit dilution 1:64000.
Western Blot	Approx. 60-65kDa band observed in Human Liver lysates (calculated MW of 61.9kDa according to NP_060712.2). This band was successfully blocked by incubation with the immunizing peptide. Recommended concentration: 0.1-0.3µg/ml. Primary incubation 1 hour at room temperature.
Application Type	Pep-ELISA, IF, WB

DOCUMENTS

- [Data Sheet](#)

GALLERY IMAGES

