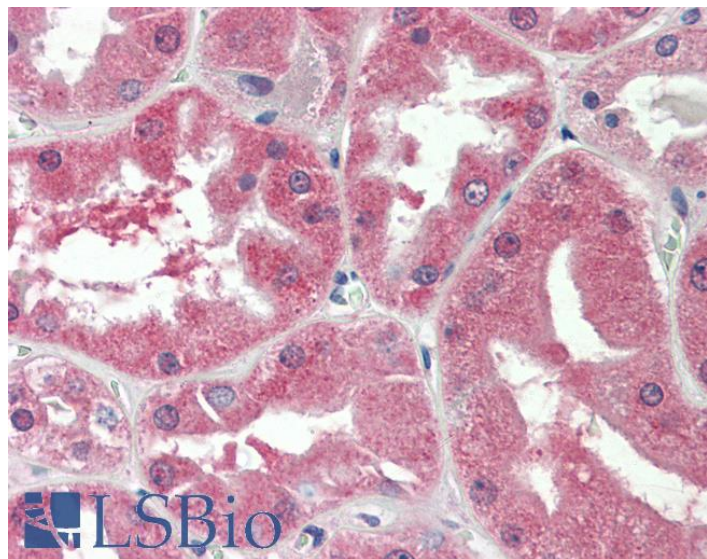


GOAT ANTI-SLC47A2 ANTIBODY

SKU: EB10661



SPECIFICATIONS

Formulation	Supplied at 0.5 mg/ml in Tris saline, 0.02% sodium azide, pH7.3 with 0.5% bovine serum albumin.
Unit Size	100 µg
Storage	Aliquot and store at -20°C. Minimize freezing and thawing.
Instructions	
Synonym / Alias	multidrug and toxin extrusion 2 multidrug and toxin extrusion 2 kidney-specific H(+)/organic cation antiporter hMATE-2 MATE-2 H+/organic cation antiporter MATE2K MATE2-K MATE2-B MATE2 FLJ31196 solute carrier family 47, member 2 SLC47A2
Names	
Accession ID	NP_690872.2; NP_001093116.1
Blocking Peptide	EBP10661
Immunogen	Peptide with sequence SECHVDFFRTPPEAH, from the internal region (near C terminus) of the protein sequence according to NP_690872.2; NP_001093116.1.
Product Comments	This antibody is expected to recognize both reported isoforms (NP_690872.2; NP_001093116.1).
Peptide Sequence	SECHVDFFRTPPEAH
Purification Method	Purified from goat serum by ammonium sulphate precipitation followed by antigen affinity chromatography using the immunizing peptide.

Shipping Instructions	Refrigerated
Predicted Species	Human
Reactive Species	Human
Human Gene ID	146802
Product Grade	https://prod-vector-labs-pimcore-assets.s3.us-east-1.amazonaws.com/assets/products/image/elite_medium.png
IHC Results	Paraffin embedded Human Kidney. Recommended concentration: 5µg/ml.
ELISA	
Detection Limit	Antibody detection limit dilution 1:32000.
Western Blot	Approx 60kDa band observed in Human Testis lysates (calculated MW of 61.0kDa according to NP_001093116.1). Recommended concentration: 0.1-1µg/ml. Primary incubation was 1 hour.
Application Type	Pep-ELISA, WB, IHC

DOCUMENTS

- [Data Sheet](#)

GALLERY IMAGES

