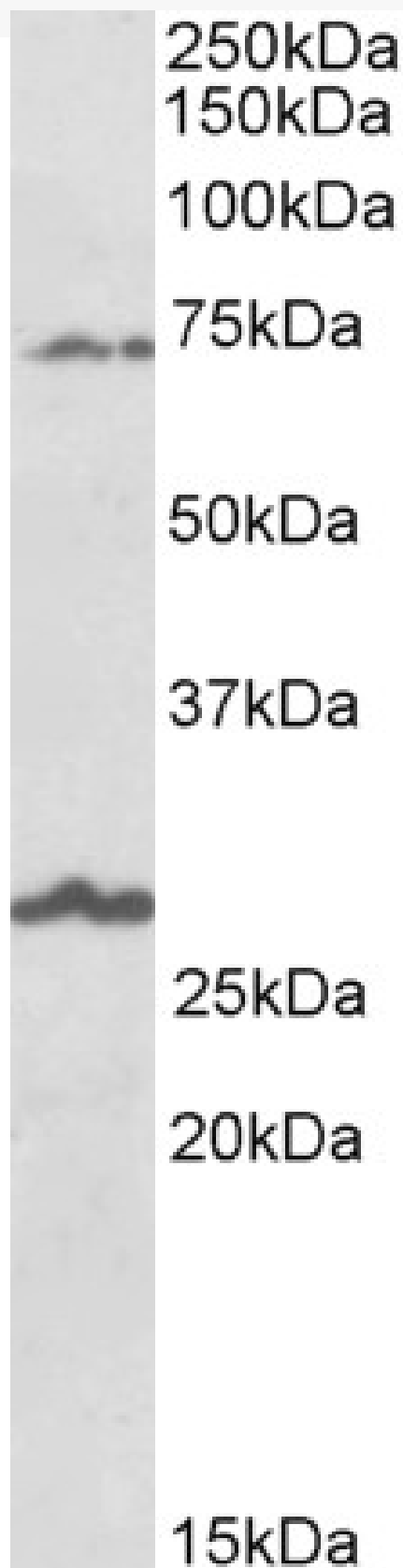


GOAT ANTI-SLC6A12 / BGT1 ANTIBODY

SKU: EB11861



SPECIFICATIONS

Formulation	Supplied at 0.5 mg/ml in Tris saline, 0.02% sodium azide, pH7.3 with 0.5% bovine serum albumin.
Unit Size	100 µg
Storage Instructions	Aliquot and store at -20°C. Minimize freezing and thawing.
Synonym / Alias Names	solute carrier family 6 (neurotransmitter transporter, betaine/GABA), member 12 sodium- and chloride-dependent betaine transporter SLC6A12 OTTHUMP00000237583 OTTHUMP00000237543 OTTHUMP00000115358 Na(+)/Cl(-) betaine/GABA transporter GAT2 gamma-aminobutyric acid transporter FLJ38727 BGT-1 BGT1
Accession ID	NP_003035.3
Blocking Peptide	EBP11861
Immunogen	Peptide with sequence CLDGSAGRNFGPSPT, from the C Terminus of the protein sequence according to NP_003035.3.
Product Comments	Reported variants represent identical protein: NP_001193860.1, NP_003035.3, NP_001116319.1, NP_001116320.1.
Peptide Sequence	CLDGSAGRNFGPSPT
Purification Method	Purified from goat serum by ammonium sulphate precipitation followed by antigen affinity chromatography using the immunizing peptide.
Shipping Instructions	Refrigerated
Predicted Species	Human
Reactive Species	Human
Human Gene ID	6539
Product Grade	https://prod-vector-labs-pimcore-assets.s3.us-east-1.amazonaws.com/assets/products/image/elite_medium.png
IHC Results	Paraffin embedded Human Liver. Recommended concentration: 10µg/ml.
ELISA Detection Limit	Antibody detection limit dilution 1:128000.
Western Blot	Approx 70kDa band observed in Human Brain lysates from several regions (calculated MW of 69.4kDa according to NP_003035.3). Recommended concentration: 1-3µg/ml. An additional band of unknown identity was also consistently observed at 27kDa. This band was successfully blocked by incubation with the immunizing peptide. Primary incubation was 1 hour.
Application Type	Pep-ELISA, WB, IHC

DOCUMENTS

- [Data Sheet](#)

GALLERY IMAGES

