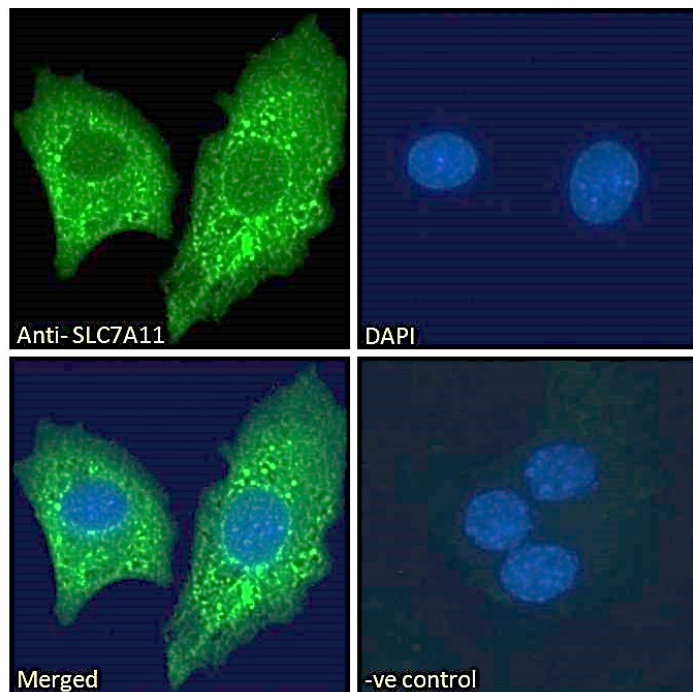


GOAT ANTI-SLC7A11 ANTIBODY

SKU: EB07480



SPECIFICATIONS

Formulation Supplied at 0.5 mg/ml in Tris saline, 0.02% sodium azide, pH7.3 with 0.5% bovine serum albumin.

Unit Size 100 µg

Storage Instructions Aliquot and store at -20°C. Minimize freezing and thawing.

Synonym / Alias Names cystine/glutamate transporter[xCT][CCBR1][solute carrier family 7, (cationic amino acid transporter, y+ system) member 11][SLC7A11]

Usage Summary Immunofluorescence: Strong expression of the protein seen in vesicles of HepG2 cells and in vesicles/ER of A549 cells. Recommended concentration: 10µg/ml.

Accession ID NP_055146.1

Blocking Peptide EBP07480

Immunogen Peptide with sequence C-KGQTQNFKDAFSGRD, from the internal region of the protein sequence according to NP_055146.1.

Peptide Sequence	C-KGQTQNFKDAFSGRD
Purification Method	Purified from goat serum by ammonium sulphate precipitation followed by antigen affinity chromatography using the immunizing peptide.
Shipping Instructions	Refrigerated
Predicted Species	Human
Reactive Species	Human
Human Gene ID	23657
Product Grade	https://prod-vector-labs-pimcore-assets.s3.us-east-1.amazonaws.com/assets/products/image/elite_medium.png
ELISA Detection Limit	Antibody detection limit dilution 1:32000.
Application Type	Pep-ELISA, IF

DOCUMENTS

- [Data Sheet](#)

GALLERY IMAGES

