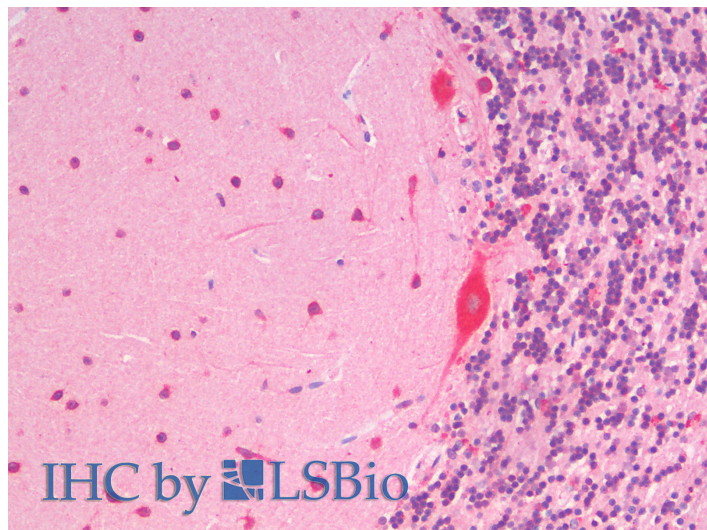


# GOAT ANTI-SLC7A6 / Y+LAT-2 (C TERMINUS) ANTIBODY

**SKU:** EB12064



## SPECIFICATIONS

**Formulation** Supplied at 0.5 mg/ml in Tris saline, 0.02% sodium azide, pH7.3 with 0.5% bovine serum albumin.

**Unit Size** 100 µg

**Storage Instructions** Aliquot and store at -20°C. Minimize freezing and thawing.

**Synonym / Alias Names** y+LAT2|y(+)L-type amino acid transporter 2|solute carrier family 7 member 6|solute carrier family 7 (cationic amino acid transporter, y+ system), member 6|cationic amino acid transporter, y+ system|amino acid permease|Y+L amino acid transporter 2|y+LAT-2|LAT3|LAT-2|solute carrier family 7 (amino acid transporter light chain, y+L system), member 6|SLC7A6

**Accession ID** NP\_003974.3

**Blocking Peptide** EBP12064

**Immunogen** Peptide with sequence C-ELDVAEEKKDERKTD, from the C Terminus of the protein sequence according to NP\_003974.3.

**Product Comments** Reported variants represent identical protein: NP\_003974.3, NP\_001070253.1

**Peptide Sequence** C-ELDVAEEKKDERKTD

**Purification Method** Purified from goat serum by ammonium sulphate precipitation followed by antigen affinity chromatography using the immunizing peptide.

<b>Shipping Instructions</b>	Refrigerated
<b>Predicted Species</b>	Human
<b>Reactive Species</b>	Human
<b>Human Gene ID</b>	9057
<b>Product Grade</b>	<a href="https://prod-vector-labs-pimcore-assets.s3.us-east-1.amazonaws.com/assets/products/image/elite_medium.png">https://prod-vector-labs-pimcore-assets.s3.us-east-1.amazonaws.com/assets/products/image/elite_medium.png</a>
<b>IHC Results</b>	Paraffin embedded Human Brain (Cerebellum). Recommended concentration: 5µg/ml.
<b>ELISA</b>	
<b>Detection Limit</b>	Antibody detection limit dilution 1:32000.
<b>Western Blot</b>	Approx 58-60kDa band observed in Human Heart lysates (calculated MW of 56.8kDa according to NP_003974.3. Recommended concentration: 0.3-1µg/ml. Primary incubation was 1 hour.
<b>Application Type</b>	Pep-ELISA, WB, IHC

## DOCUMENTS

- [Data Sheet](#)

## GALLERY IMAGES

