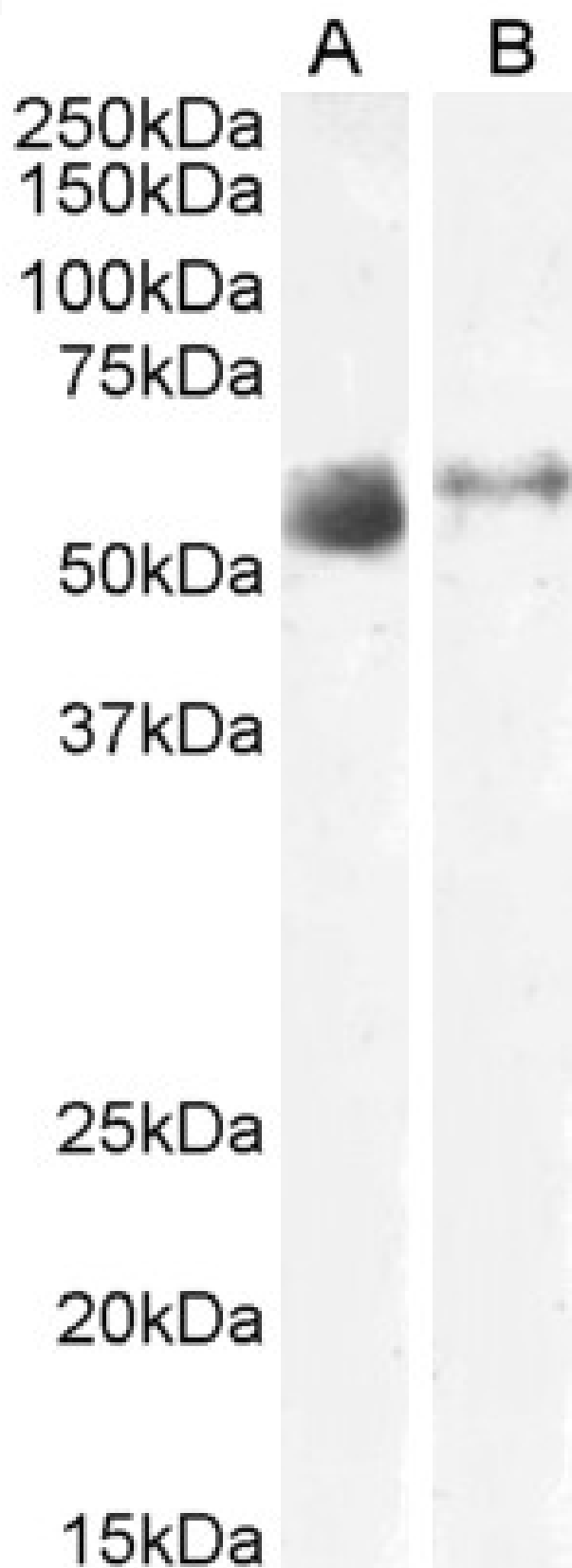


GOAT ANTI-SLC7A7 / Y+LAT-1 ANTIBODY

SKU: EB12061



SPECIFICATIONS

Formulation	Supplied at 0.5 mg/ml in Tris saline, 0.02% sodium azide, pH7.3 with 0.5% bovine serum albumin.
Unit Size	100 µg
Storage Instructions	Aliquot and store at -20°C. Minimize freezing and thawing.
Synonym / Alias Names	SLC7A7 solute carrier family 7 (amino acid transporter light chain, y+L system), member 7 LAT3 LPI MOP-2 Y+LAT1 y+LAT-1 Y+L amino acid transporter 1 monocyte amino acid permease 2 solute carrier family 7 (cationic amino acid transporter, y+ system), member 7 y(+)L-type amino acid transporter 1
Accession ID	NP_001119577.1
Blocking Peptide	EBP12061
Immunogen	Peptide with sequence SQPEVETSPLGD-C, from the N Terminus of the protein sequence according to NP_001119577.1.
Product Comments	Reported variants represent identical protein: NP_001119577.1, NP_001119578.1
Peptide Sequence	SQPEVETSPLGD-C
Purification Method	Purified from goat serum by ammonium sulphate precipitation followed by antigen affinity chromatography using the immunizing peptide.
Shipping Instructions	Refrigerated
Predicted Species	Human
Reactive Species	Human
Human Gene ID	9056
Product Grade	https://prod-vector-labs-pimcore-assets.s3.us-east-1.amazonaws.com/assets/products/image/elite_medium.png
ELISA Detection Limit	Antibody detection limit dilution 1:128000.
Western Blot	Approx 55-58kDa band observed in Human Lung and Skeletal Muscle lysates (calculated MW of 56.0kDa according to NP_001119577.1. Recommended concentration: 1-3µg/ml.
Application Type	Pep-ELISA, WB

DOCUMENTS

- [Data Sheet](#)

GALLERY IMAGES

