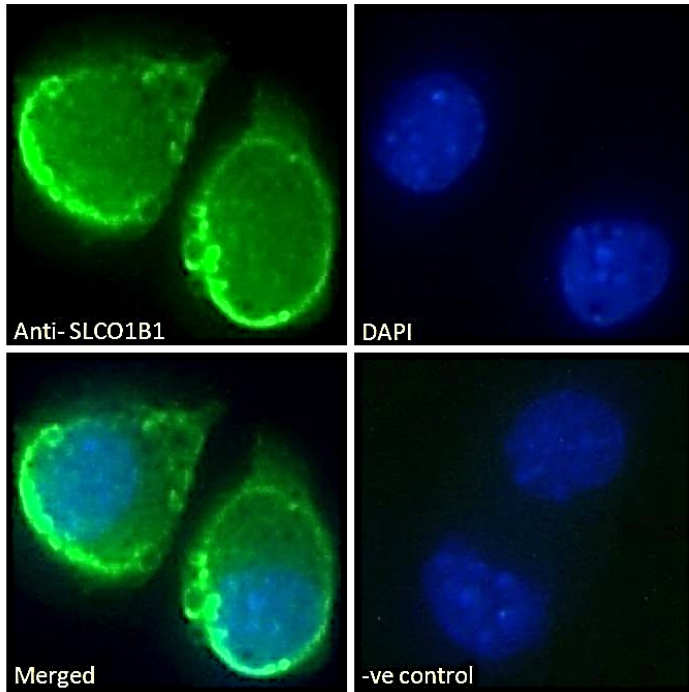




GOAT ANTI-SLCO1B1 ANTIBODY

SKU: EB10666



SPECIFICATIONS

Formulation Supplied at 0.5 mg/ml in Tris saline, 0.02% sodium azide, pH7.3 with 0.5% bovine serum albumin.

Unit Size 100 µg

Storage Instructions Aliquot and store at -20°C. Minimize freezing and thawing.

Synonym / Alias Names solute c| sodium-independent organic anion-transporting polypeptide 2| liver-specific organic anion transporter 1| OATP-2| OATPC| OATP2| OATP1B1| OATP-C| MGC133282| LST1| LST-1| solute carrier organic anion transporter family, member 1B1|SLCO1B1

Usage Summary **Immunofluorescence:** Strong expression of the protein seen in the plasma membrane of HepG2 cells. Recommended concentration: 10µg/ml. This antibody has been successfully used in IF on Human: Malinen MM et al (2019). PMID: 30685239.

Accession ID NP_006437.3

Blocking Peptide EBP10666



Immunogen	Peptide with sequence C-KYQEKDINASEN, from the internal region (near C Terminus) of the protein sequence according to NP_006437.3.
Peptide Sequence	C-KYQEKDINASEN
Purification Method	Purified from goat serum by ammonium sulphate precipitation followed by antigen affinity chromatography using the immunizing peptide.
Shipping Instructions	Refrigerated
Predicted Species	Human
Reactive Species	Human
Human Gene ID	10599
Product Grade	https://prod-vector-labs-pimcore-assets.s3.us-east-1.amazonaws.com/assets/products/image/elite_medium.png
ELISA Detection Limit	Antibody detection limit dilution 1:32000.
Application Type	Pep-ELISA, IF

SELECTED REFERENCES

[{"pmid": 30685239, "intro": "**This antibody has been successfully used in IF on Human:**", "title": "Protein expression and function of organic anion transporters in short-term and long-term cultures of Huh7 human hepatoma cells.", "author": "Malinen MM, Ito K, Kang HE, Honkakoski P, Brouwer KLR", "journal": "Eur J Pharm Sci. 2019 Mar 15;130:186-195"}]

GALLERY IMAGES

