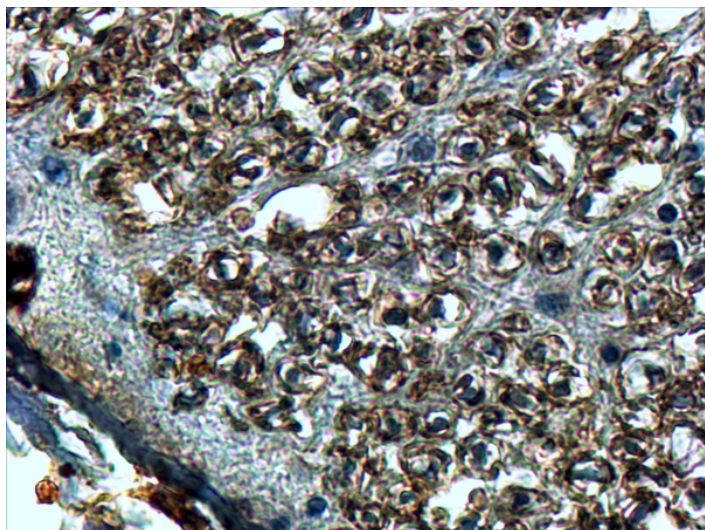


GOAT ANTI-SLIT2 ANTIBODY

SKU: EB07287



SPECIFICATIONS

Formulation Supplied at 0.5 mg/ml in Tris saline, 0.02% sodium azide, pH7.3 with 0.5% bovine serum albumin.

Unit Size 100 µg

Storage Instructions Aliquot and store at -20°C. Minimize freezing and thawing.

Synonym /

Alias Names SLIT2|slit homolog 2 (Drosophila)|HGNC:11086|SLIL3|Slit-2

Accession ID NP_004778.1

Blocking Peptide EBP07287

Immunogen Peptide with sequence DDCQDNKCKNGAH, from the internal region of the protein sequence according to NP_004778.1.

Peptide Sequence DDCQDNKCKNGAH

Purification Method Purified from goat serum by ammonium sulphate precipitation followed by antigen affinity chromatography using the immunizing peptide.

Shipping Instructions Refrigerated

Predicted Species	Human, Mouse, Rat, Dog
Reactive Species	Human
Human Gene ID	9353
Mouse Gene ID	20563
Rat Gene ID	360272
Product Grade	https://prod-vector-labs-pimcore-assets.s3.us-east-1.amazonaws.com/assets/products/image/elite_medium.png
IHC Results	In paraffin embedded Human Spinal Cord shows staining of the cellular membrane in the bundles of sensory fibres. Recommended concentration, 4-8µg/ml.
ELISA	
Detection Limit	Antibody detection limit dilution 1:1000.
Application Type	Pep-ELISA, IHC

DOCUMENTS

- [Data Sheet](#)

GALLERY IMAGES

