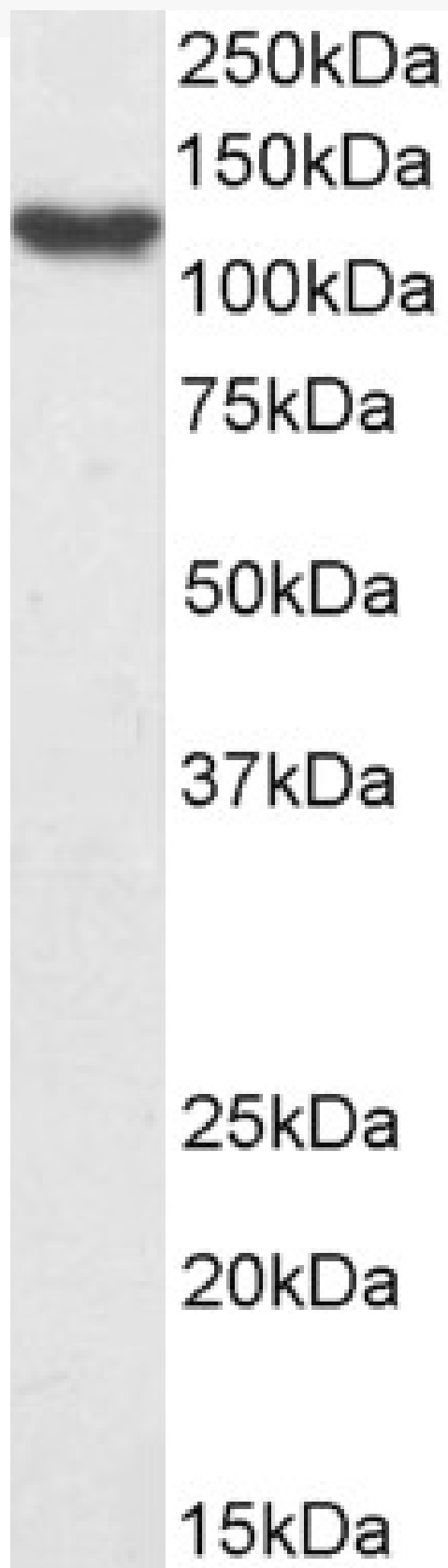


GOAT ANTI-SMARCA3 ANTIBODY

SKU: EB05441



SPECIFICATIONS

Formulation	Supplied at 0.5 mg/ml in Tris saline, 0.02% sodium azide, pH7.3 with 0.5% bovine serum albumin.
Unit Size	100 µg
Storage Instructions	Aliquot and store at -20°C. Minimize freezing and thawing.
Synonym / Alias Names	SNF2L3 DNA-binding protein/plasminogen activator inhibitor-1 regulator helicase-like transcription factor sucrose nonfermenting-like 3 SNF2-like 3 SWI/SNF related, matrix associated, actin dependent regulator of chromatin, subfamily a, member 3 HIP116A SNF2L3 HIP116 RNF80 HLTF1 ZBU1 SMARCA3 HLTF
Usage Summary	Flow Cytometry: Flow cytometric analysis of A431 cells. Recommended concentration: 10ug/ml.
Accession ID	NP_003062.2; NP_620636.1; NP_001305863.1
Blocking Peptide	EBP05441
Immunogen	Peptide with sequence C-KQAKINEIRTLIDL, from the C Terminus of the protein sequence according to NP_003062.2; NP_620636.1; NP_001305863.1.
Peptide Sequence	C-KQAKINEIRTLIDL
Purification Method	Purified from goat serum by ammonium sulphate precipitation followed by antigen affinity chromatography using the immunizing peptide.
Shipping Instructions	Refrigerated
Predicted Species	Human, Mouse, Rat, Dog, Cow
Reactive Species	Human
Human Gene ID	6596
Mouse Gene ID	20585
Product Grade	https://prod-vector-labs-pimcore-assets.s3.us-east-1.amazonaws.com/assets/products/image/elite_medium.png
ELISA Detection Limit	Antibody detection limit dilution 1:16000.
Western Blot	Approx. 125kDa band observed in nuclear lysates of cell line HeLa and in preliminary testing of A431 nuclear cell lysate (calculated MW of 114kDa according to NP_003062.2). This molecular weight is routinely observed by other sources. Recommended concentration: 0.3-1µg/ml. Primary incubation 1 hour at room temperature.
Application Type	Pep-ELISA, WB, FC

DOCUMENTS

- [Data Sheet](#)

GALLERY IMAGES

