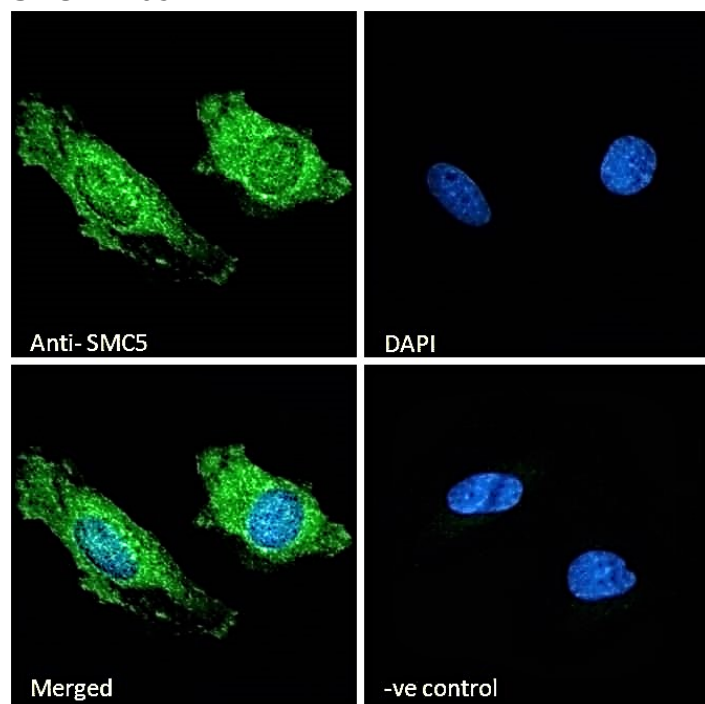


# GOAT ANTI-SMC5 ANTIBODY

SKU: EB09424



## SPECIFICATIONS

**Formulation** Supplied at 0.5 mg/ml in Tris saline, 0.02% sodium azide, pH7.3 with 0.5% bovine serum albumin.

**Unit Size** 100 µg

**Storage Instructions** Aliquot and store at -20°C. Minimize freezing and thawing.

**Synonym / Alias Names** SMC5 structural maintenance of chromosomes 5-like 1|SMC5 protein|OTTHUMP00000063367|SMC5L1|KIAA0594|structural maintenance of chromosomes 5|SMC5

**Usage Summary** **Immunofluorescence:** Strong expression of the protein seen in HeLa cells. Recommended concentration: 10µg/ml. **Flow Cytometry:** Flow cytometric analysis of HeLa cells. Recommended concentration: 10ug/ml.

**Accession ID** NP\_055925.2

**Blocking Peptide** EBP09424

<b>Immunogen</b>	Peptide with sequence C-TSKHLEHKDNELRQ, from the Internal region of the protein sequence according to NP_055925.2.
<b>Peptide Sequence</b>	C-TSKHLEHKDNELRQ
<b>Purification Method</b>	Purified from goat serum by ammonium sulphate precipitation followed by antigen affinity chromatography using the immunizing peptide.
<b>Shipping Instructions</b>	Refrigerated
<b>Predicted Species</b>	Human, Mouse, Rat, Cow, Dog
<b>Reactive Species</b>	Human
<b>Human Gene ID</b>	23137
<b>Mouse Gene ID</b>	226026
<b>Rat Gene ID</b>	293967
<b>Product Grade</b>	<a href="https://prod-vector-labs-pimcore-assets.s3.us-east-1.amazonaws.com/assets/products/image/elite_medium.png">https://prod-vector-labs-pimcore-assets.s3.us-east-1.amazonaws.com/assets/products/image/elite_medium.png</a>
<b>ELISA Detection Limit</b>	Antibody detection limit dilution 1:128000.
<b>Western Blot</b>	Preliminary testing showed bands at approx 100+150kDa in HEK293 nuclear lysates after 1µg/ml antibody staining (calculated MW of 129kDa according to NP_055925.2). These bands were successfully blocked by incubation with the immunizing peptide. Primary incubation 1 hour at room temperature.
<b>Application Type</b>	Pep-ELISA, IF, FC

## DOCUMENTS

- [Data Sheet](#)

## GALLERY IMAGES

