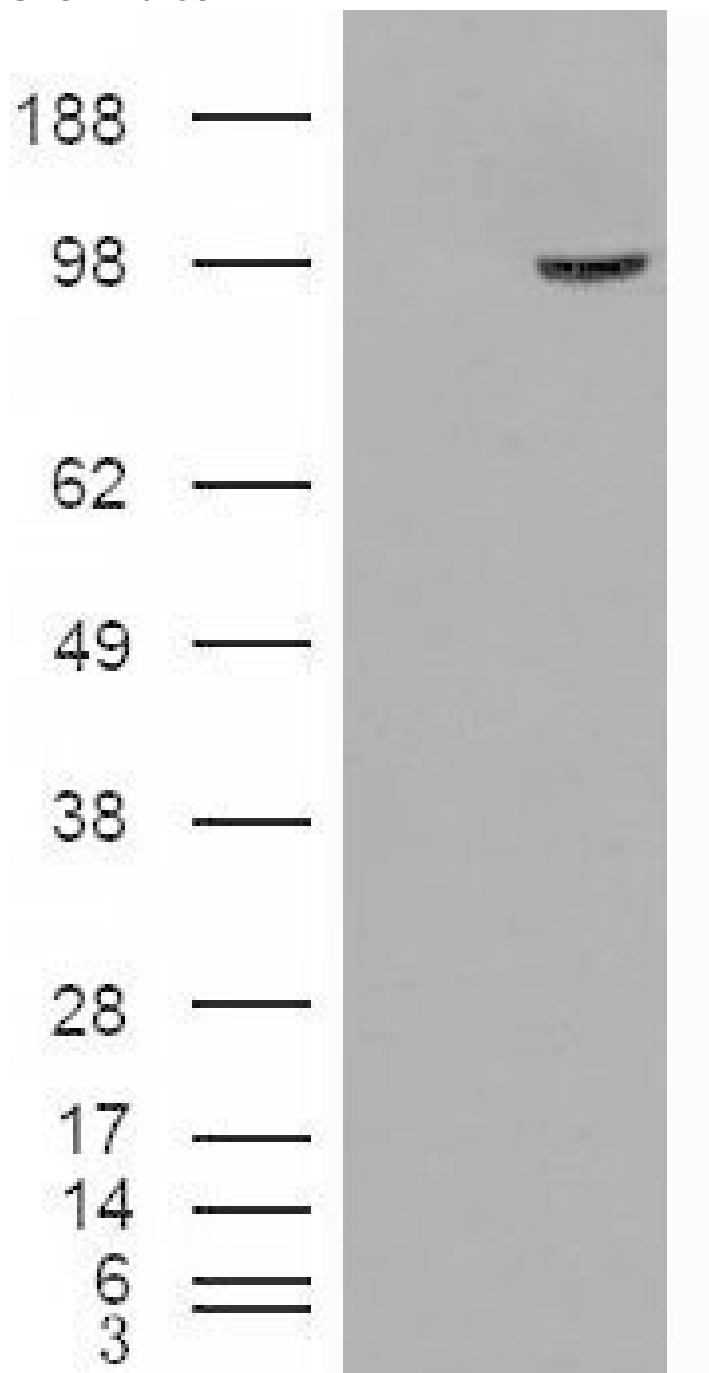


## GOAT ANTI-SMEK1 / KIAA2010 ANTIBODY

SKU: EB07982



## SPECIFICATIONS

<b>Formulation</b>	Supplied at 0.5 mg/ml in Tris saline, 0.02% sodium azide, pH7.3 with 0.5% bovine serum albumin.
<b>Unit Size</b>	100 µg
<b>Storage Instructions</b>	Aliquot and store at -20°C. Minimize freezing and thawing.
<b>Synonym / Alias Names</b>	SMEK homolog 1, suppressor of mek1 smk1 smk-1 MSTP033 FLFL1 KIAA2010 SMEK homolog 1, suppressor of mek1 (Dictyostelium)
<b>Accession ID</b>	NP_115949.3
<b>Blocking Peptide</b>	EBP07982
<b>Immunogen</b>	Peptide with sequence C-EQQRERQDNPKLD, from the internal region of the protein sequence according to NP_115949.3.
<b>Peptide Sequence</b>	C-EQQRERQDNPKLD
<b>Purification Method</b>	Purified from goat serum by ammonium sulphate precipitation followed by antigen affinity chromatography using the immunizing peptide.
<b>Shipping Instructions</b>	Refrigerated
<b>Predicted Species</b>	Human, Mouse, Rat, Dog
<b>Reactive Species</b>	Human
<b>Human Gene ID</b>	55671
<b>Mouse Gene ID</b>	68734
<b>Rat Gene ID</b>	314388
<b>Product Grade</b>	<a href="https://prod-vector-labs-pimcore-assets.s3.us-east-1.amazonaws.com/assets/products/image/elite_medium.png">https://prod-vector-labs-pimcore-assets.s3.us-east-1.amazonaws.com/assets/products/image/elite_medium.png</a>
<b>ELISA Detection Limit</b>	Antibody detection limit dilution 1:16000.
<b>Western Blot</b>	Approx 110kDa band observed in Human Pancreas lysates (calculated MW of 93.9kDa according to NP_115949.3). In transfected HEK293 transiently expressing SMEK1 a band of approx. 95kDa is observed. This band is not observed in the non-transfected HEK293. Recommended concentration: 0.3-1µg/ml.
<b>Application Type</b>	Pep-ELISA, WB

## DOCUMENTS

- [Data Sheet](#)

## GALLERY IMAGES

