



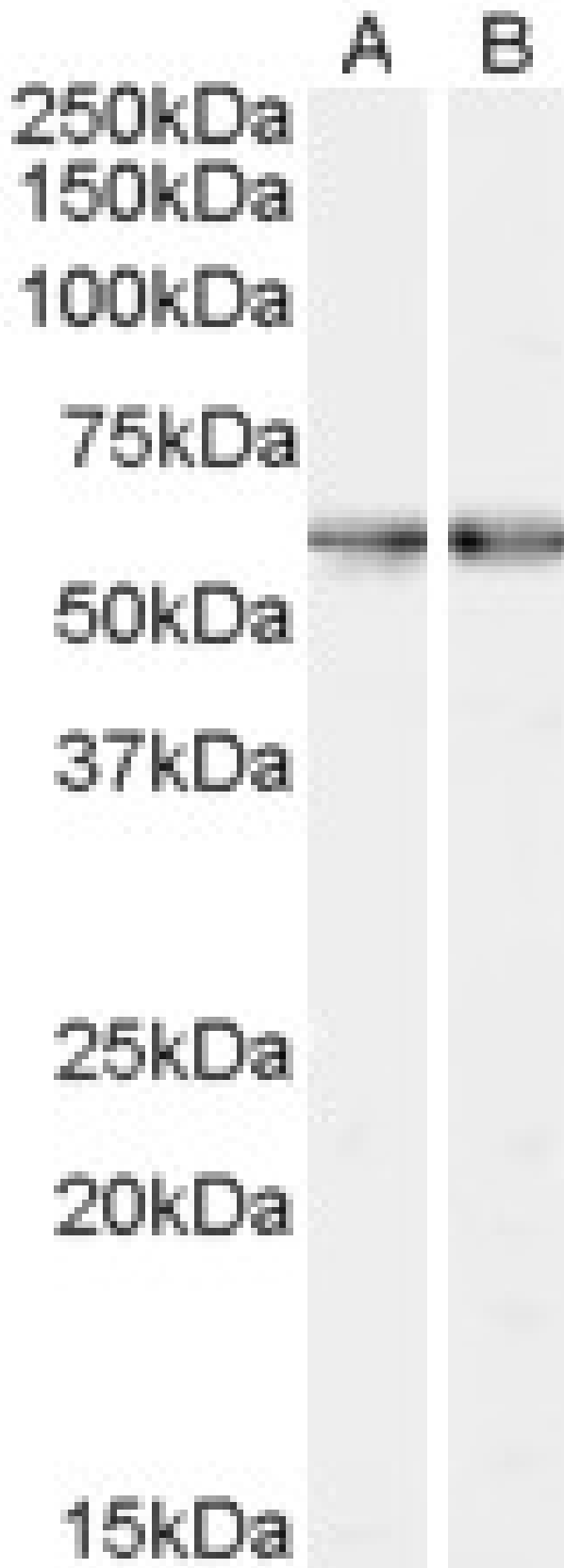
[www.everestbiotech.com](http://www.everestbiotech.com)

Email: [customerservice@vectorlabs.com](mailto:customerservice@vectorlabs.com)

Telephone: [\(650\) 697-3600](tel:(650)697-3600)

# GOAT ANTI-SMO (C TERMINUS) ANTIBODY

**SKU:** EB07026





---

## SPECIFICATIONS

<b>Unit Size</b>	100 µg
<b>Synonym / Alias Names</b>	smoothened seven transmembrane helix receptor SMOH Gx HGNC:11119 smoothened homolog (Drosophila) SMO
<b>Accession ID</b>	NP_005622.1
<b>Blocking Peptide</b>	EBP07026
<b>Immunogen</b>	Peptide with sequence C-NLMDTELMADSD, from the C Terminus of the protein sequence according to NP_005622.1.
<b>Peptide Sequence</b>	C-NLMDTELMADSD
<b>Shipping Instructions</b>	Refrigerated
<b>Predicted Species</b>	Human, Dog, Cow
<b>Reactive Species</b>	Human
<b>Human Gene ID</b>	6608
<b>Product Grade</b>	<a href="https://prod-vector-labs-pimcore-assets.s3.us-east-1.amazonaws.com/assets/products/image/elite_medium.png">https://prod-vector-labs-pimcore-assets.s3.us-east-1.amazonaws.com/assets/products/image/elite_medium.png</a>
<b>ELISA Detection Limit</b>	Antibody detection limit dilution 1:32000.
<b>Western Blot</b>	Approx 60kDa band observed in Human Bone Marrow lysates (calculated MW of 86.4kDa according to NP_005622.1). The observed molecular weight corresponds to findings with EB07444, a product of different design reacting to a different part of the same protein. Recommended concentration: 0.3-1µg/ml.
<b>Application Type</b>	Pep-ELISA, WB

## DOCUMENTS

- [Data Sheet](#)



## GALLERY IMAGES

