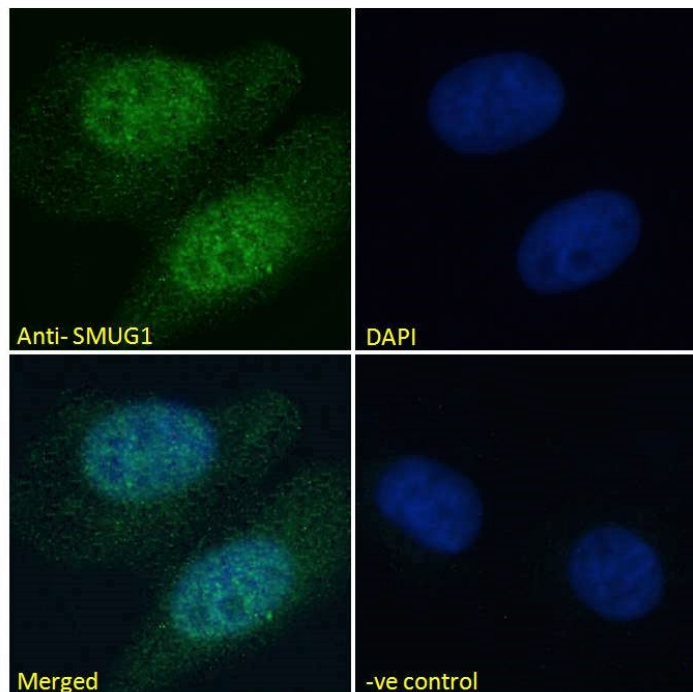


GOAT ANTI-SMUG1 ANTIBODY

SKU: EB06321



SPECIFICATIONS

Formulation	Supplied at 0.5 mg/ml in Tris saline, 0.02% sodium azide, pH7.3 with 0.5% bovine serum albumin.
Unit Size	100 µg
Storage Instructions	Aliquot and store at -20°C. Minimize freezing and thawing.
Synonym / Alias Names	MGC104370 single-strand-selective monofunctional uracil-DNA glycosylase 1 UNG3 HMUDG FDG single-strand selective monofunctional uracil DNA glycosylase SMUG1
Usage Summary	Immunofluorescence: Strong expression of the protein seen in the nuclei of MCF7 and U205 cells. Recommended concentration: 10µg/ml. Flow Cytometry: Flow cytometric analysis of MCF7 cells. Recommended concentration: 10ug/ml.
Accession ID	NP_055126.1; NP_001230718.1; NP_001338187.1; NP_001338190.1
Blocking Peptide	EBP06321

Immunogen	Peptide with sequence PQAFLGSIHEPA-C, from the N Terminus of the protein sequence according to NP_055126.1; NP_001230718.1; NP_001338187.1; NP_001338190.1.
Peptide Sequence	PQAFLGSIHEPA-C
Purification Method	Purified from goat serum by ammonium sulphate precipitation followed by antigen affinity chromatography using the immunizing peptide.
Shipping Instructions	Refrigerated
Predicted Species	Human
Reactive Species	Human
Human Gene ID	23583
Product Grade	https://prod-vector-labs-pimcore-assets.s3.us-east-1.amazonaws.com/assets/products/image/elite_medium.png
ELISA Detection Limit	Antibody detection limit dilution 1:128000.
Western Blot	Preliminary testing showed a band at approx 19kDa in lysate of cell line HeLa after 0.1µg/ml antibody staining (calculated MW of 19.6kDa according to NP_001230718.1);. Primary incubation 1 hour at room temperature.
Application Type	Pep-ELISA, IF, FC

DOCUMENTS

- [Data Sheet](#)

GALLERY IMAGES

