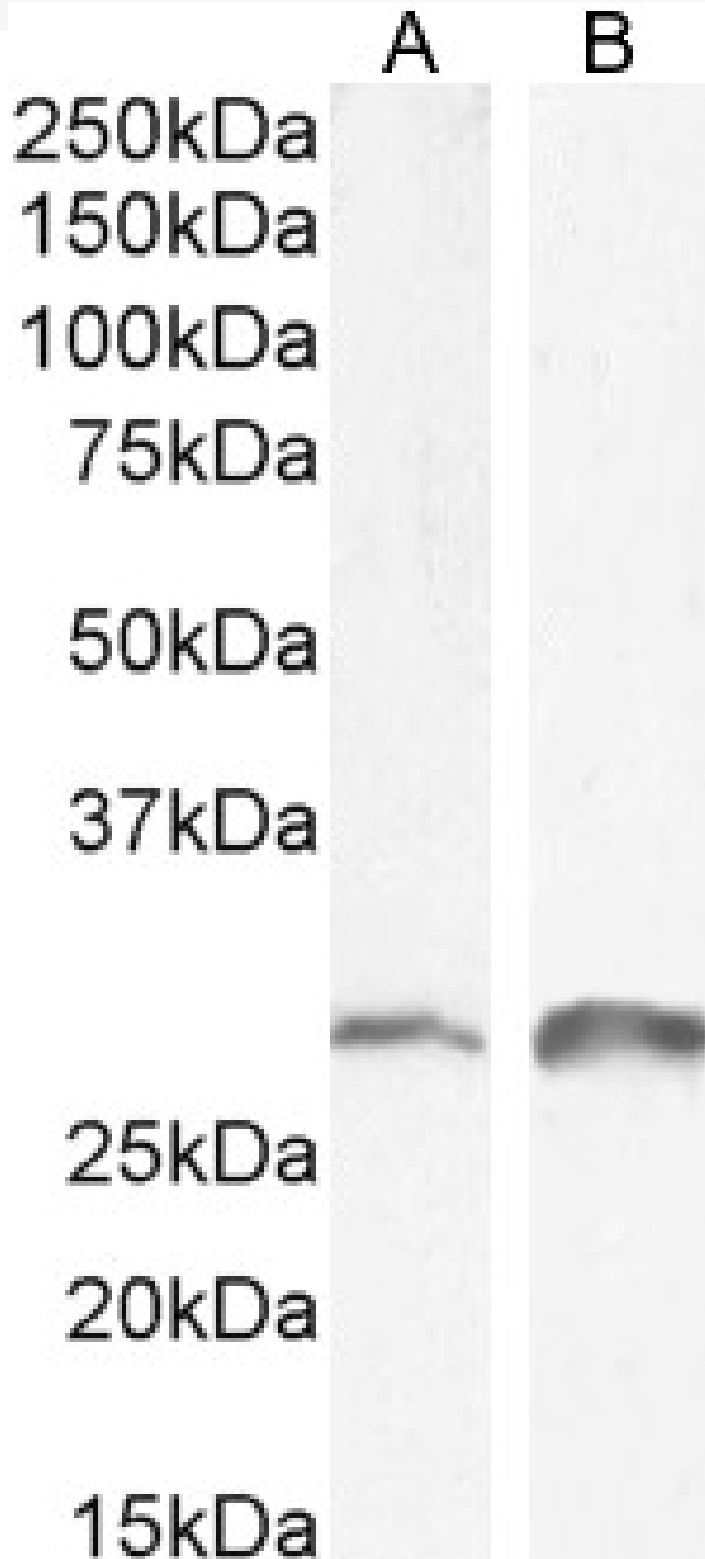


# GOAT ANTI-SNAIL HOMOLOG 1 / SNAI1 ANTIBODY

**SKU:** EB07405



## SPECIFICATIONS

<b>Formulation</b>	Supplied at 0.5 mg/ml in Tris saline, 0.02% sodium azide, pH7.3 with 0.5% bovine serum albumin.
<b>Unit Size</b>	100 µg
<b>Storage</b>	Aliquot and store at -20°C. Minimize freezing and thawing.
<b>Instructions</b>	
<b>Synonym / Alias Names</b>	snail 1 zinc finger protein snail 1 homolog snail 1 (drosophila homolog), zinc finger protein dj710H13.1 SNAH SNA SLUGH2 snail homolog 1 (Drosophila) SNAI1
<b>Accession ID</b>	NP_005976.2
<b>Blocking Peptide</b>	EBP07405
<b>Immunogen</b>	Peptide with sequence RKPSDPNRKPNY-C, from the N Terminus of the protein sequence according to NP_005976.2.
<b>Peptide Sequence</b>	RKPSDPNRKPNY-C
<b>Purification Method</b>	Purified from goat serum by ammonium sulphate precipitation followed by antigen affinity chromatography using the immunizing peptide.
<b>Shipping Instructions</b>	Refrigerated
<b>Predicted Species</b>	Human, Mouse, Rat
<b>Reactive Species</b>	Mouse, Rat
<b>Mouse Gene ID</b>	20613
<b>Rat Gene ID</b>	116490
<b>Product Grade</b>	<a href="https://prod-vector-labs-pimcore-assets.s3.us-east-1.amazonaws.com/assets/products/image/elite_medium.png">https://prod-vector-labs-pimcore-assets.s3.us-east-1.amazonaws.com/assets/products/image/elite_medium.png</a>
<b>ELISA Detection Limit</b>	Antibody detection limit dilution 1:64000.
<b>Western Blot</b>	Approx 28kDa band observed in Mouse and Rat Kidney lysates (calculated MW of 29.1kDa according to Mouse NP_035557.1 and Rat NP_446257.1). Recommended concentration: 0.1-1µg/ml. Primary incubation 1 hour at room temperature.
<b>Application Type</b>	Pep-ELISA, WB

## SELECTED REFERENCES

[{"pmid": 26417374, "intro": "**This antibody has been successfully used in IHC and Western blot on Rat:**", "title": "Effect of Tongxinluo on Nephrin Expression via Inhibition of Notch1/Snail Pathway in Diabetic Rats.", "author": "Cui F, Zou D, Gao Y, Zhang N, Wang J, Xu L, Geng J, Li J, Zhou S, Wang X.", "journal": "Evid Based Complement Alternat Med. 2015;2015:424193"}]

## DOCUMENTS

- [Data Sheet](#)

## GALLERY IMAGES

