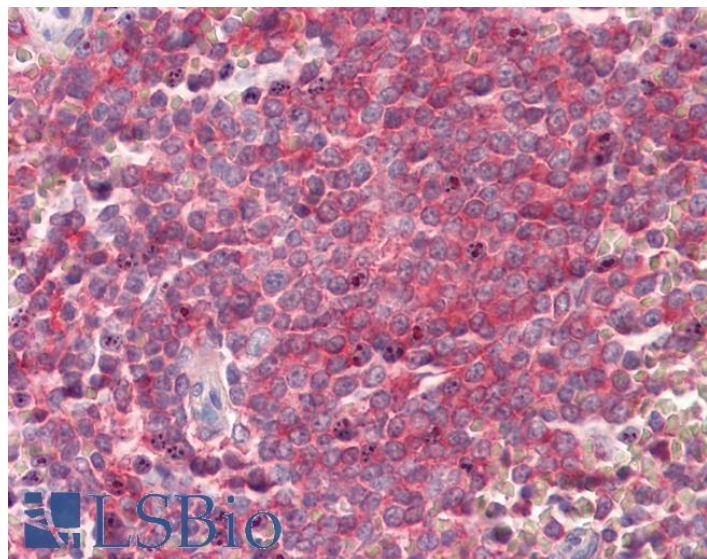


# GOAT ANTI-SNAP23 ANTIBODY

**SKU:** EB10232



## SPECIFICATIONS

**Formulation** Supplied at 0.5 mg/ml in Tris saline, 0.02% sodium azide, pH7.3 with 0.5% bovine serum albumin.

**Unit Size** 100 µg

**Storage Instructions** Aliquot and store at -20°C. Minimize freezing and thawing.

**Synonym / Alias Names** SNAP23|synaptosomal-associated protein, 23kDa|synaptosomal-associated protein 23|SNAP23B|SNAP23A|OTTHUMP00000161263|HsT17016

**Accession ID** NP\_003816.2; NP\_570710.1

**Blocking Peptide** EBP10232

**Immunogen** Peptide with sequence C-QIKRITDKAD, from the internal region of the protein sequence according to NP\_003816.2; NP\_570710.1.

**Product Comments** This antibody is expected to recognize both reported isoforms (NP\_003816.2; NP\_570710.1).

**Peptide Sequence** C-QIKRITDKAD

**Purification Method** Purified from goat serum by ammonium sulphate precipitation followed by antigen affinity chromatography using the immunizing peptide.

<b>Shipping Instructions</b>	Refrigerated
<b>Predicted Species</b>	Human, Mouse, Rat, Cow
<b>Reactive Species</b>	Human
<b>Human Gene ID</b>	8773
<b>Mouse Gene ID</b>	20619
<b>Rat Gene ID</b>	64630
<b>Product Grade</b>	<a href="https://prod-vector-labs-pimcore-assets.s3.us-east-1.amazonaws.com/assets/products/image/elite_medium.png">https://prod-vector-labs-pimcore-assets.s3.us-east-1.amazonaws.com/assets/products/image/elite_medium.png</a>
<b>IHC Results</b>	Paraffin embedded Spleen. Recommended concentration: 3.75µg/ml.
<b>ELISA</b>	
<b>Detection Limit</b>	Antibody detection limit dilution 1:8000.
<b>Western Blot</b>	Approx 26kDa band observed in Human Placenta lysates (calculated MW of 23.4kDa according to NP_003816.2). This molecular weight is routinely observed by other sources. Recommended concentration: 0.1-0.3µg/ml. Primary incubation was 1 hour.
<b>Application Type</b>	Pep-ELISA, WB, IHC

## DOCUMENTS

- [Data Sheet](#)

## GALLERY IMAGES

