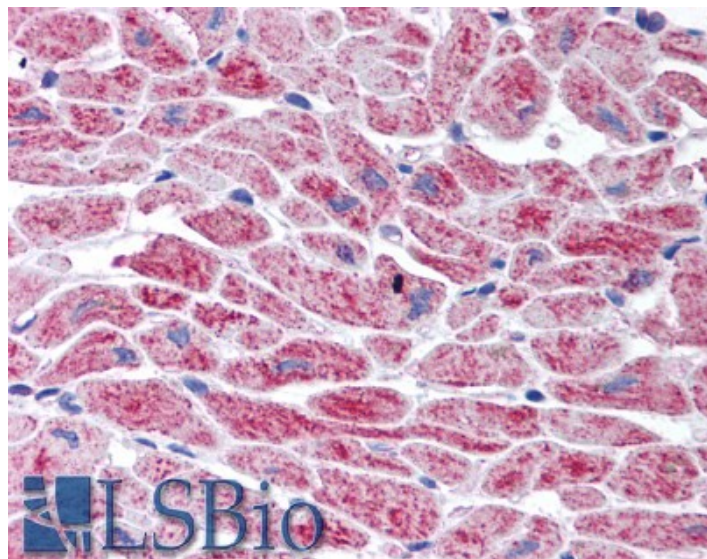


GOAT ANTI-SNM1 (C TERM) ANTIBODY

SKU: EB06358



SPECIFICATIONS

Formulation	Supplied at 0.5 mg/ml in Tris saline, 0.02% sodium azide, pH7.3 with 0.5% bovine serum albumin.
Unit Size	100 µg
Storage Instructions	Aliquot and store at -20°C. Minimize freezing and thawing.
Synonym / Alias Names	OTTHUMP00000020516 DNA cross-link repair 1A SNM1A Artemis DNA-crosslink repair gene SNM1 DNA cross-link repair 1A (PSO2 homolog, S. cerevisiae) KIAA0086 SNM1 PSO2 DCLRE1A
Accession ID	NP_055696.3
Blocking Peptide	EBP06358
Immunogen	Peptide with sequence C-EKYFREWKLEAGY, from the C Terminus of the protein sequence according to NP_055696.3.
Peptide Sequence	C-EKYFREWKLEAGY
Purification Method	Purified from goat serum by ammonium sulphate precipitation followed by antigen affinity chromatography using the immunizing peptide.
Shipping Instructions	Refrigerated

Predicted Species	Human
Reactive Species	Human
Human Gene ID	9937
Product Grade	https://prod-vector-labs-pimcore-assets.s3.us-east-1.amazonaws.com/assets/products/image/elite_medium.png
IHC Results	Paraffin embedded Human Heart. Recommended concentration: 5µg/ml.
ELISA	
Detection Limit	Antibody detection limit dilution 1:16000.
Application Type	Pep-ELISA, IHC

DOCUMENTS

- [Data Sheet](#)

GALLERY IMAGES

