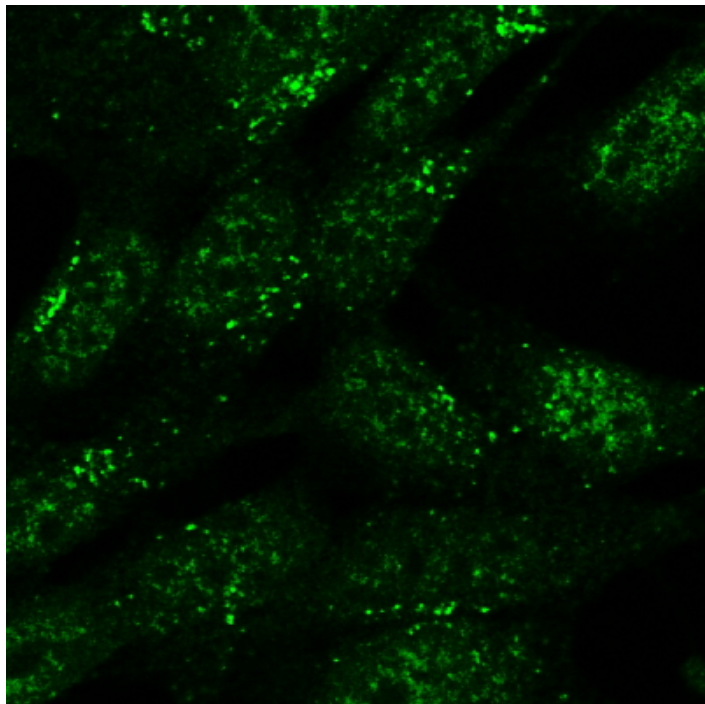


# GOAT ANTI-SNX1 ANTIBODY

**SKU:** EB09792



## SPECIFICATIONS

<b>Formulation</b>	Supplied at 0.5 mg/ml in Tris saline, 0.02% sodium azide, pH7.3 with 0.5% bovine serum albumin.
<b>Unit Size</b>	100 µg
<b>Storage</b>	
<b>Instructions</b>	Aliquot and store at -20°C. Minimize freezing and thawing.
<b>Synonym /</b>	
<b>Alias</b>	SNX1 Vps5 sorting nexin 1A sorting nexin 1 SNX1A MGC8664 HsT17379
<b>Names</b>	
<b>Usage</b>	<strong>Immunocytochemistry:</strong> Vesicular staining of SNX1 (green) in formaldehyde-fixed SH5Y5Y.
<b>Summary</b>	Recommended concentration, 3-5µg/ml.
<b>Accession</b>	
<b>ID</b>	NP_003090.2; NP_690039.1
<b>Blocking</b>	
<b>Peptide</b>	EBP09792
<b>Immunogen</b>	Peptide with sequence C-TNSSKPQPTYEELE, from the internal region of the protein sequence according to NP_003090.2; NP_690039.1.

<b>Product Comments</b>	This antibody is expected to recognize isoform a and c (NP_003090.2; NP_690039.1).
<b>Peptide Sequence</b>	C-TNSSKPQPTYEELE
<b>Purification Method</b>	Purified from goat serum by ammonium sulphate precipitation followed by antigen affinity chromatography using the immunizing peptide.
<b>Shipping Instructions</b>	Refrigerated
<b>Predicted Species</b>	Human, Mouse, Rat, Dog, Cow
<b>Reactive Species</b>	Human
<b>Human Gene ID</b>	6642
<b>Mouse Gene ID</b>	56440
<b>Rat Gene ID</b>	84471
<b>Product Grade</b>	<a href="https://prod-vector-labs-pimcore-assets.s3.us-east-1.amazonaws.com/assets/products/image/elite_plus_medium.png">https://prod-vector-labs-pimcore-assets.s3.us-east-1.amazonaws.com/assets/products/image/elite_plus_medium.png</a>
<b>IHC Results</b>	In paraffin embedded Human Uterus shows vesicular staining in the cytoplasm of endometrial epithelium. Recommended concentration, 3-5µg/ml.
<b>ELISA Detection Limit</b>	Antibody detection limit dilution 1:64000.
<b>Western Blot</b>	Approx 75kDa band observed in lysates of cell lines HeLa and U2OS (calculated MW of 59.1kDa according to NP_003090.2). This molecular weight is routinely observed by other sources . Recommended concentration: 0.1-1µg/ml. Primary incubation 1 hour at room temperature.
<b>Application Type</b>	Pep-ELISA, WB, IHC, ICC

## DOCUMENTS

- [Data Sheet](#)

## GALLERY IMAGES

