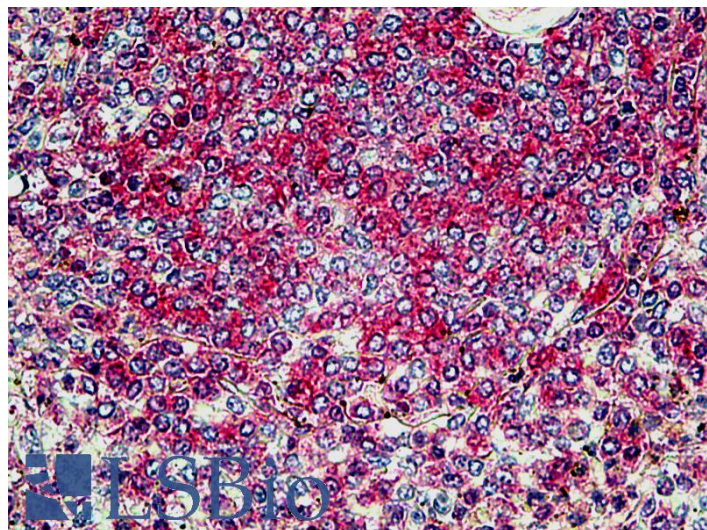


GOAT ANTI-SNX4 ANTIBODY

SKU: EB06216



SPECIFICATIONS

Formulation Supplied at 0.5 mg/ml in Tris saline, 0.02% sodium azide, pH7.3 with 0.5% bovine serum albumin.

Unit Size 100 µg

Storage Instructions Aliquot and store at -20°C. Minimize freezing and thawing.

Synonym /

Alias sorting nexin-4|OTTHUMP00000215866|ATG24B|sorting nexin 4|SNX4

Names

Accession ID NP_003785.1

Blocking Peptide EBP06216

Immunogen Peptide with sequence QVWTNAKECF SKM, from the C Terminus of the protein sequence according to NP_003785.1.

Product Comments A phox (PX) domain protein. In mouse, there is also a hypothetical protein called similar to SNX4 (XP_123014.1), which is virtually identical to SNX4.

Peptide Sequence QVWTNAKECF SKM

Purification Method Purified from goat serum by ammonium sulphate precipitation followed by antigen affinity chromatography using the immunizing peptide.

Shipping Instructions	Refrigerated
Predicted Species	Human, Mouse
Reactive Species	Human
Human Gene ID	8723
Mouse Gene ID	69150
Product Grade	https://prod-vector-labs-pimcore-assets.s3.us-east-1.amazonaws.com/assets/products/image/elite_medium.png
IHC Results	In paraffin embedded Human Placenta shows preferential staining in the syncytiotrophoblast layers. Paraffin embedded Human Spleen. Recommended concentration: 3.75µg/ml.
ELISA	
Detection Limit	Antibody detection limit dilution 1:32000.
Application Type	Pep-ELISA, IHC

DOCUMENTS

- [Data Sheet](#)

GALLERY IMAGES

