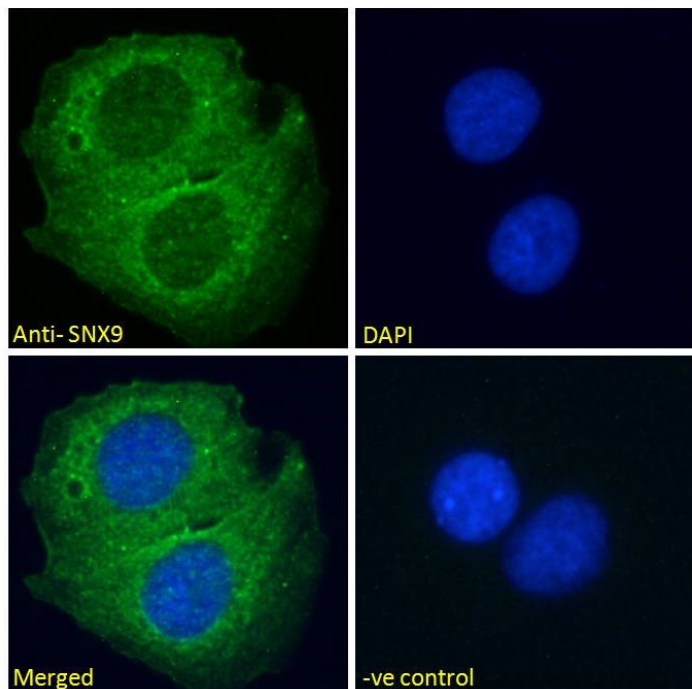


# GOAT ANTI-SNX9 ANTIBODY

SKU: EB07157



## SPECIFICATIONS

**Formulation** Supplied at 0.5 mg/ml in Tris saline, 0.02% sodium azide, pH7.3 with 0.5% bovine serum albumin.

**Unit Size** 100 µg

**Storage Instructions** Aliquot and store at -20°C. Minimize freezing and thawing.

**Synonym / Alias Names** Wiskott-Aldrich syndrome protein (WASP) interactor protein|SH3 and PX domain-containing protein SH3PX1|OTTHUMP00000040083|WISP|SH3PX1|SDP1|MSTP155|MST155|RP11-266C7.10|sorting nexin 9|SNX9

**Usage Summary** <strong>Immunofluorescence:</strong> Strong expression of the protein seen in the cytoplasm of U2OS cells. Recommended concentration: 10µg/ml.

**Accession ID** NP\_057308.1

**Blocking Peptide** EBP07157

**Immunogen** Peptide with sequence C-HKGAIEKVKESDK, from the internal region of the protein sequence according to NP\_057308.1.

<b>Peptide Sequence</b>	C-HKGAIEKVKESDK
<b>Purification Method</b>	Purified from goat serum by ammonium sulphate precipitation followed by antigen affinity chromatography using the immunizing peptide.
<b>Shipping Instructions</b>	Refrigerated
<b>Predicted Species</b>	Human, Mouse, Dog
<b>Reactive Species</b>	Human
<b>Human Gene ID</b>	51429
<b>Product Grade</b>	<a href="https://prod-vector-labs-pimcore-assets.s3.us-east-1.amazonaws.com/assets/products/image/elite_medium.png">https://prod-vector-labs-pimcore-assets.s3.us-east-1.amazonaws.com/assets/products/image/elite_medium.png</a>
<b>ELISA Detection Limit</b>	Antibody detection limit dilution 1:4000.
<b>Application Type</b>	Pep-ELISA, IF

## DOCUMENTS

- [Data Sheet](#)

## GALLERY IMAGES

