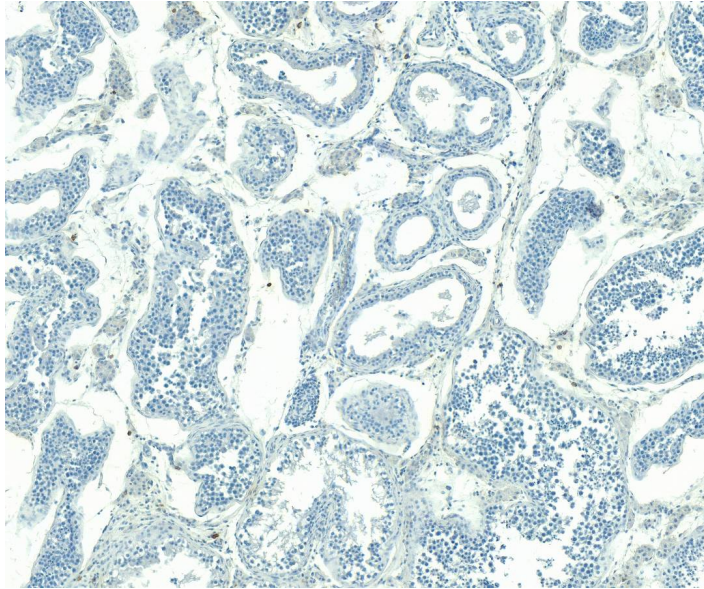


GOAT ANTI-SOCS2 ANTIBODY

SKU: EB05104



SPECIFICATIONS

Formulation	Supplied at 0.5 mg/ml in Tris saline, 0.02% sodium azide, pH7.3 with 0.5% bovine serum albumin.
Unit Size	100 µg
Storage Instructions	Aliquot and store at -20°C. Minimize freezing and thawing.
Synonym / Alias Names	suppressor of cytokine signaling-2 cytokine-inducible SH2 protein 2 STAT induced STAT inhibitor-2 suppressor of cytokine signaling 2 STAT12 SOCS-2 SSI-2 Cish2 SSI2 CIS2 SOCS2
Accession ID	NP_003868.1; NP_001257396.1
Blocking Peptide	EBP05104
Immunogen	Peptide with sequence C-RLKDYLEEYKFQV, from the C Terminus of the protein sequence according to NP_003868.1; NP_001257396.1.
Peptide Sequence	C-RLKDYLEEYKFQV
Purification Method	Purified from goat serum by ammonium sulphate precipitation followed by antigen affinity chromatography using the immunizing peptide.

Shipping Instructions	Refrigerated
Predicted Species	Human, Mouse, Rat
Reactive Species	Human
Human Gene ID	8835
Product Grade	https://prod-vector-labs-pimcore-assets.s3.us-east-1.amazonaws.com/assets/products/image/elite_medium.png
IHC Results	Paraffin embedded Human Testis. Recommended concentration: 4µg/ml.
ELISA	
Detection Limit	Antibody detection limit dilution 1:4000.
Application Type	Pep-ELISA, IHC

GALLERY IMAGES

