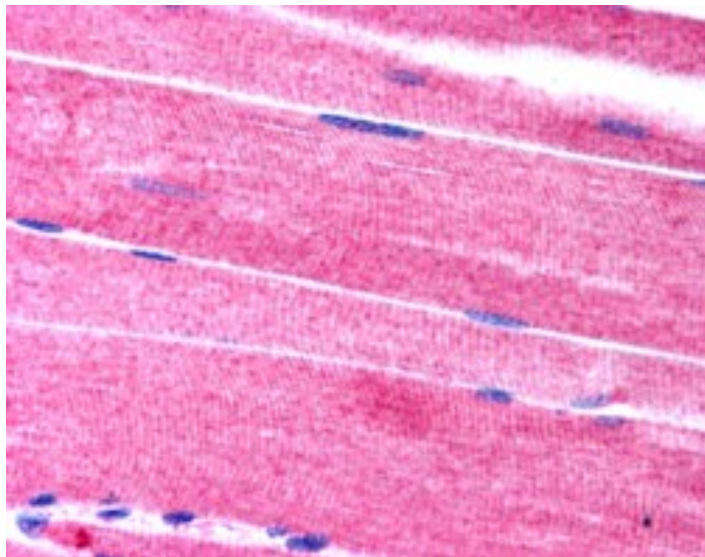


GOAT ANTI-SORBS1 / PONSIN (C TERMINUS) ANTIBODY

SKU: EB05455



SPECIFICATIONS

Formulation	Supplied at 0.5 mg/ml in Tris saline, 0.02% sodium azide, pH7.3 with 0.5% bovine serum albumin.
Unit Size	100 µg
Storage	Aliquot and store at -20°C. Minimize freezing and thawing.
Instructions	
Synonym / Alias Names	ponsin OTTHUMP00000020145 OTTHUMP00000020144 OTTHUMP00000020143 OTTHUMP00000020142 DKFZp586P1422 c-Cbl associated protein Fas-ligand associated factor 2 R85FL FLJ12406 FLAF2 SH3-domain protein 5 (ponsin) DKFZp451C066 DKFZP586P1422 KIAA1296 FLJ12406 sh3p12 ponsin SH3P12 SORB1 SH3D5 CAP sorbin and SH3 domain containing 1 PONSIN SORBS1
Accession ID	NP_006425.2; NP_056200.1; NP_001030126.1; NP_001030127.1; NP_001030128.1; NP_079267.1; NP_001030129.1
Blocking Peptide	EBP05455
Immunogen	Peptide with sequence C-GTFPGNYVKPLYL, from the C Terminus of the protein sequence according to NP_006425.2; NP_056200.1; NP_001030126.1; NP_001030127.1; NP_001030128.1; NP_079267.1; NP_001030129.1.
Product Comments	This antibody is expected to recognize all seven reported isoforms (NP_006425.2, NP_056200.1, NP_001030126.1, NP_001030127.1, NP_001030128.1, NP_079267.1 and NP_001030129.1).
Peptide Sequence	C-GTFPGNYVKPLYL
Purification Method	Purified from goat serum by ammonium sulphate precipitation followed by antigen affinity chromatography using the immunizing peptide.
Shipping Instructions	Refrigerated

Predicted Species	Human, Mouse, Rat, Pig
Reactive Species	Human
Human Gene ID	10580
Mouse Gene ID	20411
Product Grade	https://prod-vector-labs-pimcore-assets.s3.us-east-1.amazonaws.com/assets/products/image/elite_medium.png
IHC Results	Paraffin embedded Human Skeletal Muscle. Recommended concentration: 2.5µg/ml.
ELISA	
Detection Limit	Antibody detection limit dilution 1:16000.
Application Type	Pep-ELISA, IHC

DOCUMENTS

- [Data Sheet](#)

GALLERY IMAGES

