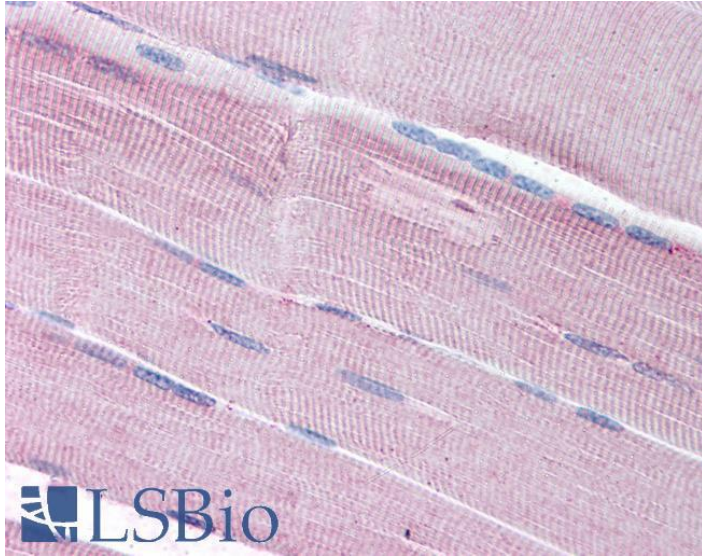


GOAT ANTI-SORBS1 / PONSIN (INTERNAL) ANTIBODY

SKU: EB07177



SPECIFICATIONS

Formulation Supplied at 0.5 mg/ml in Tris saline, 0.02% sodium azide, pH7.3 with 0.5% bovine serum albumin.

Unit Size 100 µg

Storage Instructions Aliquot and store at -20°C. Minimize freezing and thawing.

Synonym / Alias Names ponsin|c-Cbl associated protein|SH3-domain protein 5 (ponsin)|SH3-domain protein 5|Fas-ligand associated factor 2|SORB1|SH3P12|SH3D5|R85FL|KIAA1296|FLJ12406|FLAF2|DKFZp586P1422|DKFZp451C066|CAP|sorbin and SH3 domain containing 1|SORBS1

Accession ID NP_006425.2; NP_056200.1; NP_001030126.1; NP_001030127.1; NP_001030128.1; NP_079267.1; NP_001030129.1; NP_001277227.2

Blocking Peptide EBP07177

Immunogen Peptide with sequence C-SPKSEDDSDLYSP, from the internal region of the protein sequence according to NP_006425.2; NP_056200.1; NP_001030126.1; NP_001030127.1; NP_001030128.1; NP_079267.1; NP_001030129.1; NP_001277227.2.

Product Comments This antibody is expected to recognise reported isoforms (NP_006425.2, NP_056200.1, NP_001030126.1, NP_001030127.1, NP_001030128.1, NP_079267.1 and NP_001030129.1; NP_001277227.2).

Peptide Sequence C-SPKSEDDSDLYSP

Purification Method	Purified from goat serum by ammonium sulphate precipitation followed by antigen affinity chromatography using the immunizing peptide.
Shipping Instructions	Refrigerated
Predicted Species	Human
Reactive Species	Human
Human Gene ID	10580
Product Grade	https://prod-vector-labs-pimcore-assets.s3.us-east-1.amazonaws.com/assets/products/image/elite_medium.png
IHC Results	Paraffin embedded Human Skeletal Muscle. Recommended concentration: 5µg/ml.
ELISA Detection Limit	Antibody detection limit dilution 1:2000.
Application Type	Pep-ELISA, IHC

DOCUMENTS

- [Data Sheet](#)

GALLERY IMAGES

