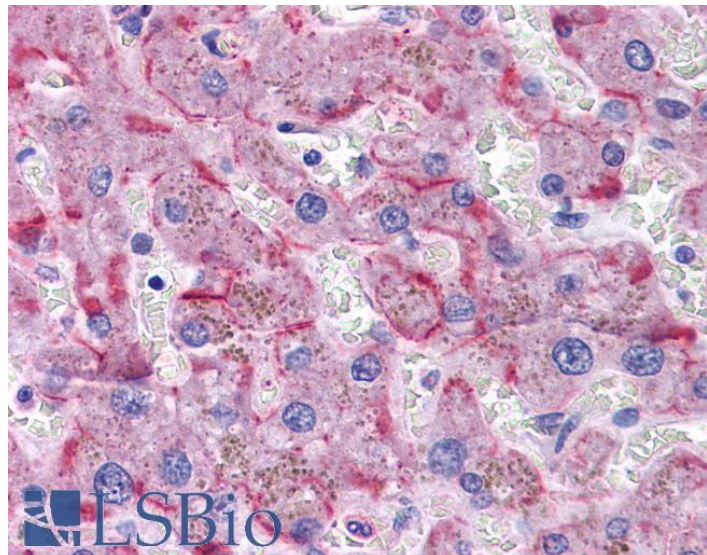


# GOAT ANTI-SORBS1/PONSIN (INTERNAL REGION) ANTIBODY

**SKU:** EB07687



## SPECIFICATIONS

**Formulation** Supplied at 0.5 mg/ml in Tris saline, 0.02% sodium azide, pH7.3 with 0.5% bovine serum albumin.

**Unit Size** 100 µg

**Storage Instructions** Aliquot and store at -20°C. Minimize freezing and thawing.

**Synonym / Alias Names** ponsin|c-Cbl associated protein|SH3-domain protein 5 (ponsin)|SH3-domain protein 5|Fas-ligand associated factor 2|SORB1|SH3P12|SH3D5|R85FL|KIAA1296|FLJ12406|FLAF2|DKFZp586P1422|DKFZp451C066|CAP|sorbin and SH3 domain containing 1|SORBS1

**Accession ID** NP\_006425.2; NP\_056200.1; NP\_001030126.1; NP\_001030127.1; NP\_001030128.1; NP\_079267.1; NP\_001030129.1; NP\_001277225.2; NP\_001364131.1; NP\_001371378.1

**Blocking Peptide** EBP07687

**Immunogen** Peptide with sequence C-SERNDWEPPDKKVD, from the internal region of the protein sequence according to NP\_006425.2; NP\_056200.1; NP\_001030126.1; NP\_001030127.1; NP\_001030128.1; NP\_079267.1; NP\_001030129.1; NP\_001277225.2; NP\_001364131.1; NP\_001371378.1.

**Product Comments** This antibody is expected to recognise multiple isoforms.

**Peptide Sequence** C-SERNDWEPPDKKVD

<b>Purification Method</b>	Purified from goat serum by ammonium sulphate precipitation followed by antigen affinity chromatography using the immunizing peptide.
<b>Shipping Instructions</b>	Refrigerated
<b>Predicted Species</b>	Human, Mouse
<b>Reactive Species</b>	Human
<b>Human Gene ID</b>	10580
<b>Mouse Gene ID</b>	20411
<b>Product Grade</b>	<a href="https://prod-vector-labs-pimcore-assets.s3.us-east-1.amazonaws.com/assets/products/image/elite_medium.png">https://prod-vector-labs-pimcore-assets.s3.us-east-1.amazonaws.com/assets/products/image/elite_medium.png</a>
<b>IHC Results</b>	Paraffin embedded Human Pancreas and Liver. Recommended concentration: 3.75µg/ml.
<b>ELISA</b>	
<b>Detection Limit</b>	Antibody detection limit dilution 1:32000.
<b>Western Blot</b>	Preliminary experiments gave an approx 65kDa band in Human Adipose lysates after 0.3µg/ml antibody staining. Please note that currently we cannot find an explanation in the literature for the band we observe given the calculated size of 76.6kDa according to NP_006425.2 and higher sizes for other isoforms. The 65kDa band was successfully blocked by incubation with the immunizing peptide.
<b>Application Type</b>	Pep-ELISA, IHC

## DOCUMENTS

- [Data Sheet](#)

## GALLERY IMAGES

