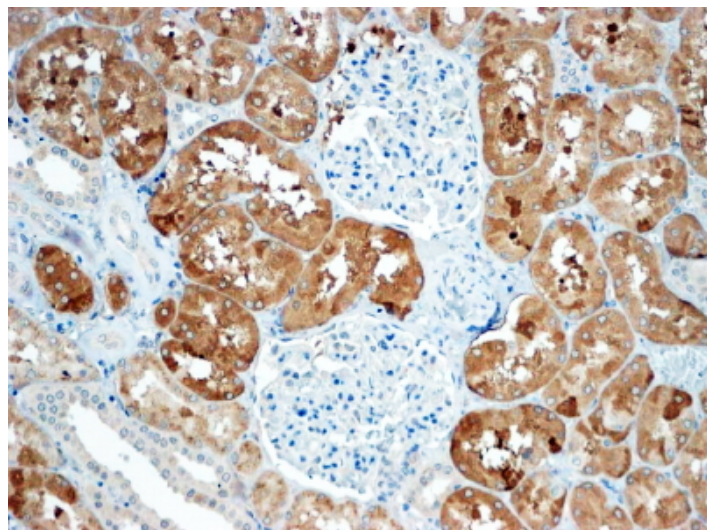


GOAT ANTI-SOST ANTIBODY

SKU: EB10411



SPECIFICATIONS

Formulation Supplied at 0.5 mg/ml in Tris saline, 0.02% sodium azide, pH7.3 with 0.5% bovine serum albumin.

Unit Size 100 µg

Storage Instructions Aliquot and store at -20°C. Minimize freezing and thawing.

Synonym /

Alias SOST|VBCH|sclerostin|sclerosteosis

Names

Accession ID NP_079513.1

Blocking Peptide EBP10411

Immunogen Peptide with sequence C-PRARSAKANQAELEN, from the C Terminus of the protein sequence according to NP_079513.1.

Peptide Sequence C-PRARSAKANQAELEN

Purification Method Purified from goat serum by ammonium sulphate precipitation followed by antigen affinity chromatography using the immunizing peptide.

Shipping Instructions Refrigerated

Predicted Species	Human, Mouse, Rat, Dog, Cow
Reactive Species	Human
Human Gene ID	50964
Mouse Gene ID	74499
Rat Gene ID	80722
Product Grade	https://prod-vector-labs-pimcore-assets.s3.us-east-1.amazonaws.com/assets/products/image/elite_medium.png
IHC Results	In paraffin embedded Human Kidney shows cytoplasm staining exclusively in the PCT. Recommended concentration: 4-6µg/ml.
ELISA	
Detection Limit	Antibody detection limit dilution 1:32000.
Application Type	Pep-ELISA, IHC

DOCUMENTS

- [Data Sheet](#)

GALLERY IMAGES

